



Immunisation Schedule

July 2013

Guide



This manual is for clinical staff and contains important information for all Medtech 32 users.
Please ensure this document is circulated amongst all your clinical staff.
We suggest these should be filed safely for future reference.

Table of Contents

Introduction	3
Pre-requisites	4
Add a new Vaccine Code	5
Add a New Vaccine Age Group	7
Add & Map a New Vaccine Product	9
Immunisation Schedule Utility	12
Add a New Schedule Path	13
Appendix A	17
Standard Vaccines.....	17
Non-Standard Vaccines.....	18
Sub-Population Vaccines.....	18
Queensland Providers Only.....	18

Introduction

The **Medtech32 Immunisation Schedule Guide** has been written to provide assistance to your Clinical staff in the creation of new vaccines, how to edit existing vaccines, and how to add new vaccines to the **Medtech32 Vaccine Product Mapping** screen.

This document will also assist with the new **July 2013 Immunisation Schedule** changes for:

- The addition of 3 new *Influenza* vaccines:
 1. Agrippal (**AGRPAL**)
 2. Fluvax Junior
 3. Vaxigrip Junior (**VGRJNR**)

- The addition also of two new vaccine code *edits* for the new:
 1. Measles, Mumps, Rubella and Varicella (**MMRV**)
 2. Priorix-Tetra and ProQuad (which will be available from 1 July 2013).

Setup and Configuration instructions on the use of the **Immunisation Schedule Utility** have been broken down in to separate sections so that you may select and use those that are relevant to your needs. These are covered below and describe how to:

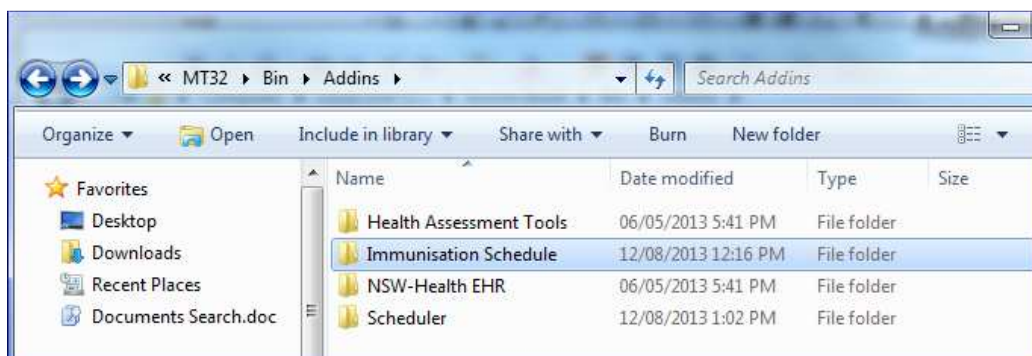
- Add new Vaccines
- Add new Vaccine Groups
- Add new Age Range groups
- Add new Immunisation Path (as per your State and Practice requirements).

Please refer to the Immunisation link for further information on the requirements for your State <http://www.medtechglobal.com/aus/medtech-online-3/medtech-3/downloads-8.html>

The Medtech 'Immunisation Schedule' Utility is available from our website as per the link: <http://www.medtechglobal.com/aus/medtech-online-au/mo-medtech32-au/downloads-8/useful-tools-and-documents.html>

Please download and save this Utility - Ensure that it is saved in to the correct folder path described below (where your MT32 Bin resides) so that you may access this Utility at any time from within the Utility Menu in your Medtech32 system. A screenshot of the folder is shown below.

(Drive location where you MT32 lives)\MT32\Bin\Tools\Addins folder.



Pre-requisites

Please ensure that the person who will be altering or creating new Pathways or Vaccines in your Medtech32 system has read and fully understands the process as described in this instruction guide.

The requirements for the successful management of your **Immunisation Schedule** have been listed below, and must be applied prior to adding any new vaccines or pathways:

- Ensure that the staff member updating the Immunisation Schedule has the correct **Medtech32 Administration** and **Clinical Rights** and access.
- Ensure that you have run the latest **Medtech32 Vaccine Product Mapping Utility (March 2013)** from our website www.medtechglobal.com on all your Medtech32 databases.

The March 2013 update will add/edit the following vaccines and complete the additional tasks as numbered below.


ACIR Vaccine Code / Description (Old)	ACIR Vaccine Code / Description (New)
Priorix-Tetra	PRXTET
ProQuad	PROQAD
Agrippal	AGRPAL
Vaxigrip Junior	VGRJNR

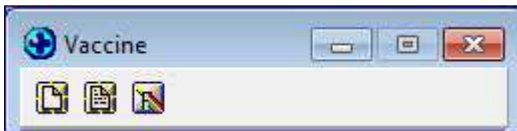
1. It will add the new Medicare ACIR vaccine as listed above.
2. It will recreate any current Medicare ACIR vaccines that are missing from your Medtech32 database.
3. It will remove any invalid or obsolete Medicare ACIR vaccines from your Medtech32 database.
4. It will remove any duplicated Medicare ACIR vaccines from your Medtech32 database.

NOTE: If the Utility is unable to determine which of the duplicated records should be kept, all duplicates will be deleted and the corresponding Medicare ACIR vaccine will then be recreated.

5. For all newly added or recreated Medicare ACIR vaccines, the Utility will default the Medtech32 Vaccine Code (MT32 Vaccine) to 'TEST', and the Medtech32 Vaccine Product Code (MT32 Code) to 'TEST' under Vaccine Product Mapping.
6. All existing Vaccine Product Mapping WILL NOT be altered, except for those Medicare ACIR vaccines that are recreated by the Utility.

Add a new Vaccine Code

1. Go to the menu option **Setup > Recall / Screening > Vaccine**.
2. To add the new **Vaccine**, click on the first icon  at the top of the screen to **Add** the new vaccine.



This will open a new screen for you to add the **Code**, and **Description** of the Vaccine. Example in the screenshot below is for the vaccine **Menitorix**

Important Note: Ensure that the **Code** used is of the correct standards as per **Appendix A** of this document.

A screenshot of a software window titled 'New Vaccine'. The window has a blue title bar with a globe icon on the left and a close button on the right. Below the title bar, there is a tabbed interface with tabs for 'Main', 'Groups', 'Products', 'Outcomes', and 'Audit'. The 'Main' tab is selected. The form contains the following fields:

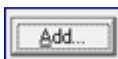
- Code: MNTRX
- Description: Menitorix
- Recall Document: [Dropdown menu]
- SMS Document: [Dropdown menu]
- Default Outcome: [Dropdown menu]
- Unload Ref: [Text field]
- Inactive:

At the bottom of the window, there are three buttons: 'OK', 'Cancel', and 'Help'.

3. After adding the **Code** and **Description**, click on the **Products** tab of the screen.

A screenshot of the 'New Vaccine' window with the 'Products' tab selected. The window title is 'New Vaccine'. The main area shows a table with the following columns: 'Code', 'Description', 'Batch No', and 'Batch Exp'. The table has one row highlighted in yellow. To the right of the table, there are two buttons: 'Add..' and 'View..'. The 'Main' tab is also visible and selected.

Then click on the **Add** button to the right to **Add** the **Product** details in here.



Enter in the relevant information:

PRODUCT CODE:

< Refer to the correct Product Code Table in **Appendix A**>

PRODUCT DESCRIPTION:

< Refer to the correct Product Description in **Appendix A**>

Add Batch No: (use your existing batch details)

Batch Expiry: (use your existing expiry date details)

- The **Outcome** Tab will be filled in automatically with the default outcome responses.

Outcome	Description	Recall In	Encounter
G	Given		✓
N	Not Given		
R	Refused		


- Click on the **Add** button  to add new **Outcomes** if required.

- Click on the **OK** button to save the **Product Code** entry.


Add a New Vaccine Age Group

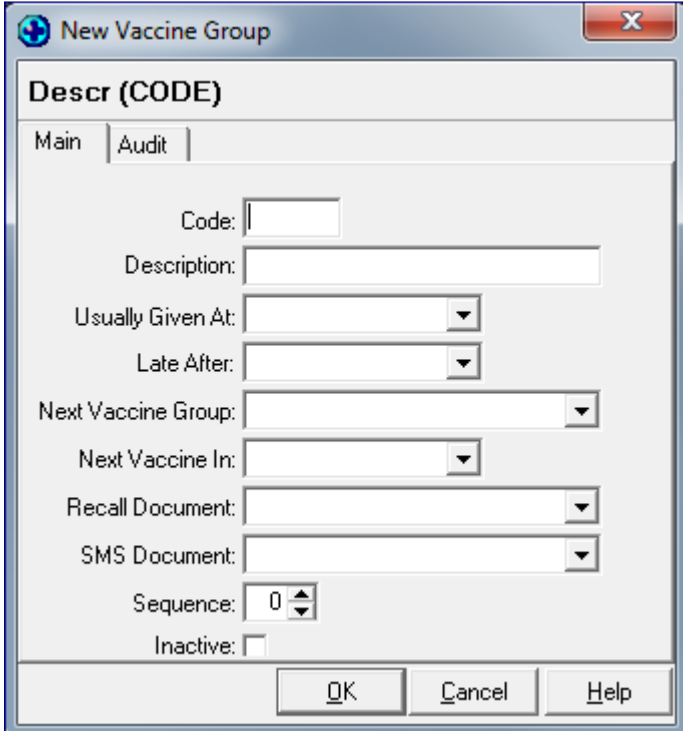
- To include a new **Age Range** for a **Vaccine Group** to appear in the **Immunisation Schedule screen** - go to the **Setup > Recall / Screening > Vaccine Group** menu option.

The **Vaccine Group** screen will appear as shown below.



Code	Description	Next Group	Next In
BIR	Birth	2M	2 months
2M	2 months	4M	2 months
4M	4 months	6M	2 months
6M	6 months	12M	6 months
12M	12 months	18M	6 months
18M	18 months	4Y	30 months
4Y	4 years		

- To add a new **Code**, click on the new icon  to open up the relevant screen.



New Vaccine Group

Descr (CODE)

Main | Audit

Code:

Description:

Usually Given At:

Late After:

Next Vaccine Group:

Next Vaccine In:

Recall Document:

SMS Document:

Sequence:

Inactive:

OK Cancel Help

- Enter in the unique **Code** and a meaningful **Description** in to the relevant fields as shown in the screenshot sample below.

The screenshot shows a 'New Vaccine Group' dialog box with the title 'Year Seven (7Y)'. It has two tabs: 'Main' and 'Audit'. The 'Main' tab is active. The fields are as follows:

- Code: 7Y
- Description: Year Seven
- Usually Given At: [Dropdown]
- Late After: [Dropdown]
- Next Vaccine Group: [Dropdown]
- Next Vaccine In: [Dropdown]
- Recall Document: [Dropdown]
- SMS Document: [Dropdown]
- Sequence: 0
- Inactive:

Buttons at the bottom: OK, Cancel, Help.

- Click on the **OK** button to save the new **Code** entry. Below is a sample screenshot of various new **Codes** and **Descriptions** created, to accommodate an advanced **Age Range** selection.

The screenshot shows a 'Vaccine Group' window with a table of entries. The table has four columns: Code, Description, Next Group, and Next In.

Code	Description	Next Group	Next In
10Y	Year 10		
15	15-49 Years		
50	50 Years and over		
65	65 Years and over		
6PLUS	6 mths < 5 years		
7Y	Year 7		
8Y	Year 8		
9Y	Year 9		
BIR	Birth	2M	2 months
2M	2 months	4M	2 months
4M	4 months	6M	2 months
6M	6 months	12M	6 months
12M	12 months	18M	6 months
18M	18 months	4Y	30 months
4Y	4 years		

Add & Map a New Vaccine Product

Important Note:

Before you can correctly configure your new Vaccines in to your **Vaccine Product Mapping** screen, you must first have ensured that the latest **Vaccine Product Mapping Utility** has been successfully run on your Medtech32 database.

This utility can be downloaded from our Medtech website www.medtechglobal.com

1. Select the **Setup > Recall / Screening > Vaccine Product Mapping** menu option. The following screen will be displayed.

Medicare Aust. Vaccine	Mt32 Vaccine	Mt32 Code	Mt32 Vaccine Product
IPOL - inactivated polio vaccine (IPV)	= Test Vaccine (TEST)	TEST	Test Product
JE-VAX (JEVAX)	= Test Vaccine (TEST)	TEST	Test Product
Menjugate (MENJUG)	= Menjugate (MENJUG)	MENJUG	Menjugate
Meningitec (MENTEC)	= Meningitec (MENTEC)	MENTEC	Meningitec
Menomune (MENUME)	= Menomune (MENUME)	MENUME	Menomune
Mencevax ACwY (MENVAX)	= Mencevax ACwY (MENVAX)	MENVAX	Mencevax ACwY
Generic MMR (MMR)	= Measles, Mumps, Rubella (MM	MMR	Measles
MMR II (MMRCSL)	= Measles, Mumps, Rubella (MM	MMRCSL	MMR II
Priorix (MMRSKB)	= Measles, Mumps, Rubella (MM	MMRSKB	Priorix
Menitorix (MNTRX)	= Test Vaccine (TEST)	TEST	Test Product
Neis Vac-C (NEISVC)	= Test Vaccine (TEST)	TEST	Test Product
Oral Polio (Polio Sabin) (OPV)	= OPV	OPV	Polio Sabin (Oral)
Generic (Monovalent) Pertussis (P)	= Generic (Monovalent) Pertussis P		Generic (Monovalent) Pertussis
Panvax (PANVAX)	= Test Vaccine (TEST)	TEST	Test Product
Pediacel (PDCL)	= Pediacel (PDCL)	PDCL	Pediacel
Poliacel (PLCL)	= Poliacel (PLCL)	PLCL	Poliacel
Pneumovax 23 (PNEUMO)	= Test Vaccine (TEST)	TEST	Test Product
ProQuad (PROQAD)	= Test Vaccine (TEST)	TEST	Test Product

2. The **Vaccine Product Mapping** screen consists of four columns.

- **Medicare Australia Vaccine Code**
 - This is the Medicare accepted code that will be sent electronically to ACIR.
- **MT32 Vaccine**
 - This is from your Vaccine that you created in Medtech (also shows the associated Code used)
- **MT32 Code**
 - This is the Code that you created for entering your Vaccine details
- **MT32 Vaccine Product**
 - This contains the details of the Product names that make up your vaccine (populated from the Vaccines Product Tab).

- Using the first column as your guide – **Medicare Aust. Vaccine** - scroll down the list until you view the new vaccine ‘**Menitorix**’ that we created at the start of this document.

Note: the new Medicare Vaccine codes were added to your Medtech32 database via the **Vaccine Product Mapping (March) 2013** utility that was run earlier.

Medicare Aust. Vaccine	Mt32 Vaccine	Mt32 Code	Mt32 Vaccine Product
IPDL - inactivated polio vaccine (IPV)	= Test Vaccine (TEST)	TEST	Test Product
JE-VAX (JEVAX)	= Test Vaccine (TEST)	TEST	Test Product
Menjugate (MENJUG)	= Menjugate (MENJUG)	MENJUG	Menjugate
Meningitec (MENTEC)	= Meningitec (MENTEC)	MENTEC	Meningitec
Menomune (MENUME)	= Menomune (MENUME)	MENUME	Menomune
Mencevax ACWY (MENVAX)	= Mencevax ACWY (MENVAX)	MENVAX	Mencevax ACWY
Generic MMR (MMR)	= Measles, Mumps, Rubella (MM)	MMR	Measles
MMR II (MMRCSL)	= Measles, Mumps, Rubella (MM)	MMRCSL	MMR II
Priorix (MMRSKB)	= Measles, Mumps, Rubella (MM)	MMRSKB	Priorix
Menitorix (MNTRX)	= Test Vaccine (TEST)	TEST	Test Product
Neis Vac-C (NEISVC)	= Test Vaccine (TEST)	TEST	Test Product
Oral Polio (Polio Sabin) (OPV)	= OPV	OPV	Polio Sabin (Oral)
Generic (Monovalent) Pertussis (P)	= Generic (Monovalent) Pertussis	P	Generic (Monovalent) Pertussis
Parvax (PANVAX)	= Test Vaccine (TEST)	TEST	Test Product
Pediacel (PDCL)	= Pediacel (PDCL)	PDCL	Pediacel
Poliacel (PLCL)	= Poliactel (PLCL)	PLCL	Poliactel
Pneumovax 23 (PNEUMD)	= Test Vaccine (TEST)	TEST	Test Product
ProQuad (PROQAD)	= Test Vaccine (TEST)	TEST	Test Product

- The Mt32 Vaccine, Mt32 Code, and Mt32 Vaccine Product columns are set to the default of **Test Vaccine (TEST)** as a place holder for you to correctly map your Vaccine to the correct Medicare Codes.

To change this, click on the MT32 Vaccine column to alter the code from **Test Vaccine (TEST)** by using the drop down menu to select your new Vaccine code ‘**MNTRX**’.

Medicare Aust. Vaccine	Mt32 Vaccine	Mt32 Code	Mt32 Vaccine Product
Infarix-IPV (IFIP)	= Test Vaccine (TEST)	TEST	Test Product
Infarix Penta (IFPA)	= Infarix-Penta (IFPA)	IFPA	Infarix-Penta
Infarix (IFX)	= Diphtheria, Tetanus, Pertussis (IFX)	IFX	Infarix - DTPa
Infarix-HepB (IFXB)	= Infarix-HepB (IFXB)	IFXB	Infarix-HepB
Influvac (INFLUV)	= Test Vaccine (TEST)	TEST	Test Product
IPDL - inactivated polio vaccine (IPV)	= Test Vaccine (TEST)	TEST	Test Product
JE-VAX (JEVAX)	= Test Vaccine (TEST)	TEST	Test Product
Menjugate (MENJUG)	= Menjugate (MENJUG)	MENJUG	Menjugate
Meningitec (MENTEC)	= Meningitec (MENTEC)	MENTEC	Meningitec
Menomune (MENUME)	= Menomune (MENUME)	MENUME	Menomune
Mencevax ACWY (MENVAX)	= Mencevax ACWY (MENVAX)	MENVAX	Mencevax ACWY
Generic MMR (MMR)	= Measles, Mumps, Rubella (MM)	MMR	Measles
MMR II (MMRCSL)	= Measles, Mumps, Rubella (MM)	MMRCSL	MMR II
Priorix (MMRSKB)	= Measles, Mumps, Rubella (MM)	MMRSKB	Priorix
Menitorix (MNTRX)	= Test Vaccine (TEST)	TEST	Test Product
Neis Vac-C (NEISVC)	= Test Vaccine (TEST)	TEST	Test Product
Oral Polio (Polio Sabin) (OPV)	= OPV	OPV	Polio Sabin (Oral)
Generic (Monovalent) Pertussis (P)	= Generic (Monovalent) Pertussis	P	Generic (Monovalent) Pertussis
Parvax (PANVAX)	= Test Vaccine (TEST)	TEST	Test Product
Pediacel (PDCL)	= Pediacel (PDCL)	PDCL	Pediacel
Poliacel (PLCL)	= Poliactel (PLCL)	PLCL	Poliactel

- Once the **MT32 Vaccine** code has been selected-repeat the process in the next column.

Medicare Aust. Vaccine	M32 Vaccine	M32 Code	M32 Vaccine Product
Inflanrix-IPV (IFIP)	= Test Vaccine (TEST)	TEST	Test Product
Inflanrix Penta (IFPA)	= Inflanrix-Penta (IFPA)	IFPA	Inflanrix-Penta
Inflanrix (IFX)	= Diphtheria, Tetanus, Pertussis (IFX)	IFX	Inflanrix - DTPa
Inflanrix-HepB (IFXB)	= Inflanrix-HepB (IFXB)	IFXB	Inflanrix-HepB
Influvac (INFLUV)	= Test Vaccine (TEST)	TEST	Test Product
IPOL - inactivated polio vaccine (IPV)	= Test Vaccine (TEST)	TEST	Test Product
JE-VAX (JEVAX)	= Test Vaccine (TEST)	TEST	Test Product
Menjugate (MENJUG)	= Menjugate (MENJUG)	MENJUG	Menjugate
Meningtec (MENTEC)	= Meningtec (MENTEC)	MENTEC	Meningtec
Menomune (MENUME)	= Menomune (MENUME)	MENUME	Menomune
Mencevax ACWY (MENVAX)	= Mencevax ACWY (MENVAX)	MENVAX	Mencevax ACWY
Generic MMR (MMR)	= Measles, Mumps, Rubella (MM MMR)	Measles	Measles
MMR II (MMRCSL)	= Measles, Mumps, Rubella (MM MMRCSL)	MMR II	MMR II
Priorix (MMRSKB)	= Measles, Mumps, Rubella (MM MMRSKB)	Priorix	Priorix
Meritorix (MNTRX)	= Meritorix (MNTRX)		Test Product
Neis Vac-C (NEISVC)	= Test Vaccine (TEST)	TEST	Test Product
Oral Polio (Polio Sabin) (OPV)	= OPV	OPV	Polio Sabin (Oral)
Generic (Monovalent) Pertussis (P)	= Generic (Monovalent) Pertussis P		Generic (Monovalent) Pertussis
Panvax (PANVAX)	= Test Vaccine (TEST)	TEST	Test Product
Pediacel (PDCL)	= Pediacel (PDCL)	PDCL	Pediacel
Pollacel (PLCL)	= Pollacel (PLCL)	PLCL	Pollacel

- The end result will be the updated **Vaccine Product Mapping** screen as shown in the screenshot sample below.

Medicare Aust. Vaccine	M32 Vaccine	M32 Code	M32 Vaccine Product
Hiberix (HBX)	= Test Vaccine (TEST)	TEST	Test Product
Rabies vaccine (HDCV)	= Rabies vaccine (HDCV)	HDCV	Rabies vaccine
Inflanrix Hexa (IFHX)	= Test Vaccine (TEST)	TEST	Test Product
Inflanrix-IPV (IFIP)	= Test Vaccine (TEST)	TEST	Test Product
Inflanrix Penta (IFPA)	= Inflanrix-Penta (IFPA)	IFPA	Inflanrix-Penta
Inflanrix (IFX)	= Diphtheria, Tetanus, Pertussis (IFX)	IFX	Inflanrix - DTPa
Inflanrix-HepB (IFXB)	= Inflanrix-HepB (IFXB)	IFXB	Inflanrix-HepB
Influvac (INFLUV)	= Test Vaccine (TEST)	TEST	Test Product
IPOL - inactivated polio vaccine (IPV)	= Test Vaccine (TEST)	TEST	Test Product
JE-VAX (JEVAX)	= Test Vaccine (TEST)	TEST	Test Product
Menjugate (MENJUG)	= Menjugate (MENJUG)	MENJUG	Menjugate
Meningtec (MENTEC)	= Meningtec (MENTEC)	MENTEC	Meningtec
Menomune (MENUME)	= Menomune (MENUME)	MENUME	Menomune
Mencevax ACWY (MENVAX)	= Mencevax ACWY (MENVAX)	MENVAX	Mencevax ACWY
Generic MMR (MMR)	= Measles, Mumps, Rubella (MM MMR)	Measles	Measles
MMR II (MMRCSL)	= Measles, Mumps, Rubella (MM MMRCSL)	MMR II	MMR II
Priorix (MMRSKB)	= Measles, Mumps, Rubella (MM MMRSKB)	Priorix	Priorix
Meritorix (MNTRX)	= Meritorix (MNTRX)	MNTRX	Meritorix
Neis Vac-C (NEISVC)	= Test Vaccine (TEST)	TEST	Test Product
Oral Polio (Polio Sabin) (OPV)	= OPV	OPV	Polio Sabin (Oral)
Generic (Monovalent) Pertussis (P)	= Generic (Monovalent) Pertussis P		Generic (Monovalent) Pertussis
Panvax (PANVAX)	= Test Vaccine (TEST)	TEST	Test Product
Pediacel (PDCL)	= Pediacel (PDCL)	PDCL	Pediacel

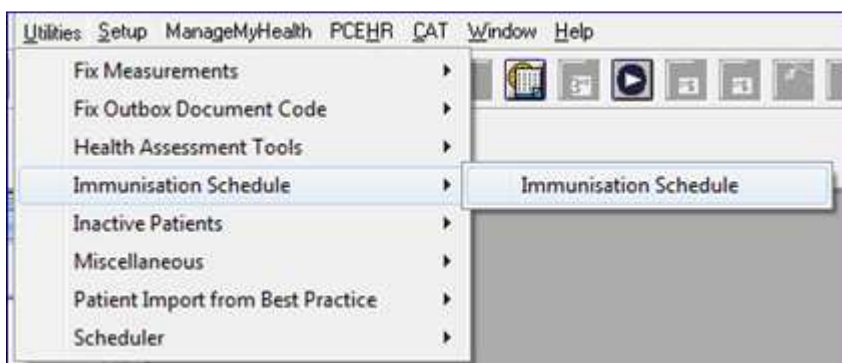
- Click on the **OK** button to save the changes.

Immunisation Schedule Utility

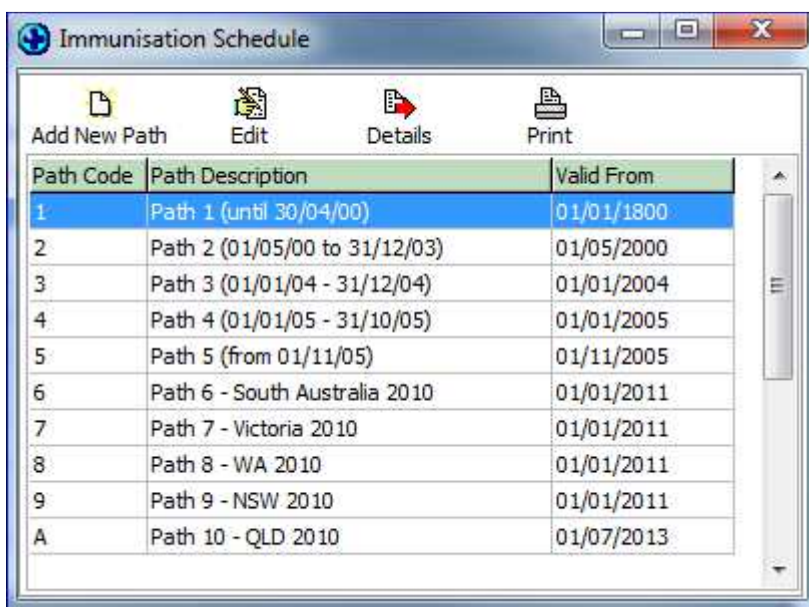
Important Note:

Only those Vaccines entered in your Vaccine Product Mapping list will be displayed as a valid option in the Immunisation Schedule Utility.

1. From the **Utility > Immunisation Schedule** menu, select the right arrow option to open up the **Immunisation Schedule**.



2. The **Immunisation Schedule** screen will open with the existing Pathways shown, as per the screenshot sample below:



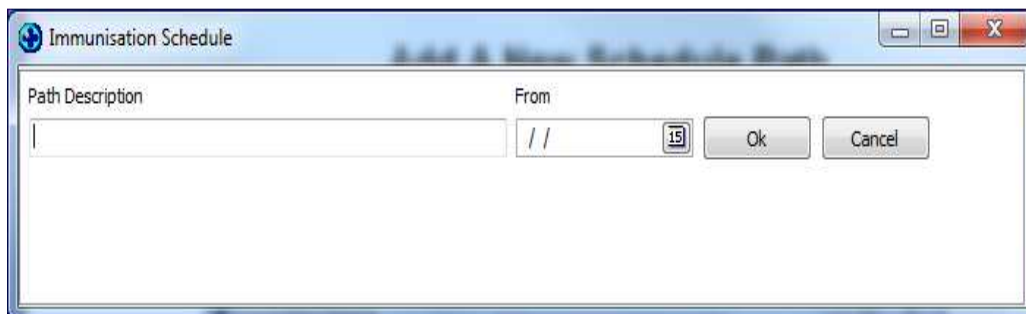
Note

The schedules shown in the screenshot above may differ greatly (or only slightly) from the **Immunisations Schedule** screen in your Practice and is for demonstration purposes only.

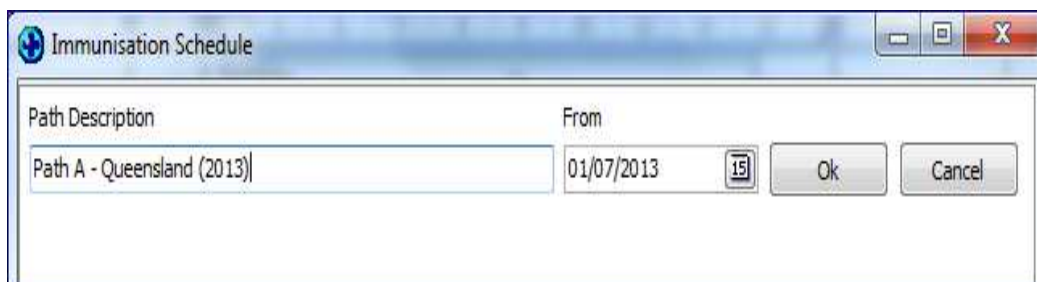
Add a New Schedule Path



1. From the **Immunisation Schedule** screen, click on the **Add New Path** button to create your new **Immunisation Schedule** Pathway.

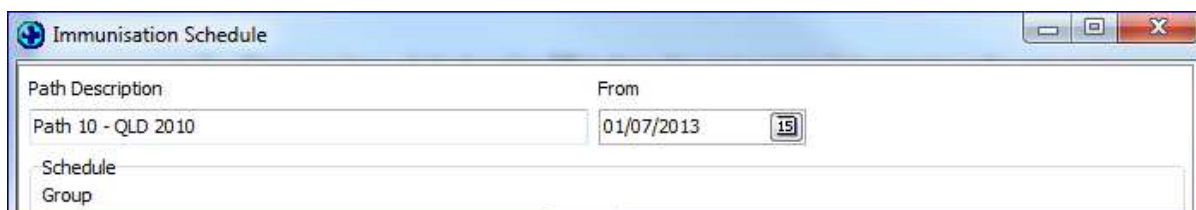


2. The **Add New Path** button will open up the following screen to allow you to create your new entry.

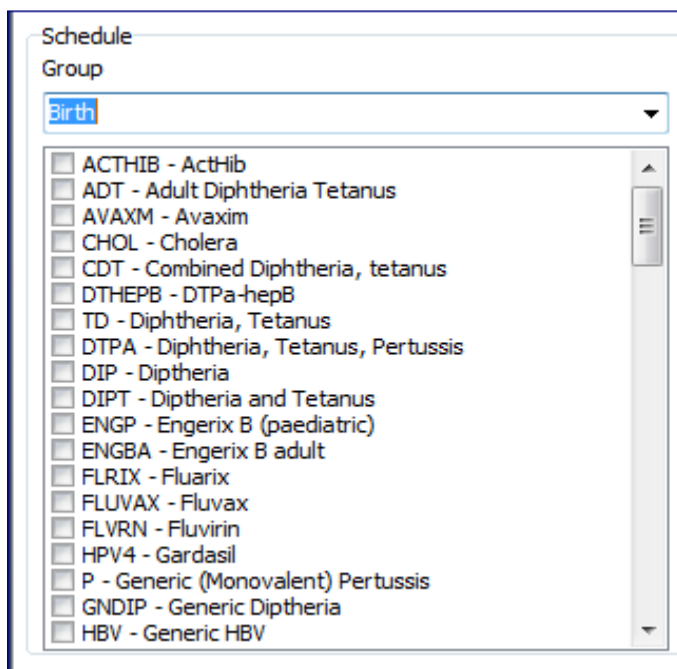


Enter in the **Description** and the **Start Date** in to the relevant fields. Click on the OK button to save the new entry.

3. Once you have clicked on the **OK** button, the next screen that appears is the actual Immunisation Schedule configuration process screen.
4. This screen will allow you to define the Vaccines for each Age Range, and is broken in to three sections:
 - The first section – contains details of the name and description of the Path, along with the valid start time of the schedule entry.




- The second section (left hand side of the screen) – contains the **Age Range** from the drop down list, and the various **Vaccines** that may be selected/ticked for inclusion of the various **Age Range** vaccines.




- The third section (right hand side of the screen) – contains the list of specified **Vaccines** for each **Age Range** as selected from the drop down list.

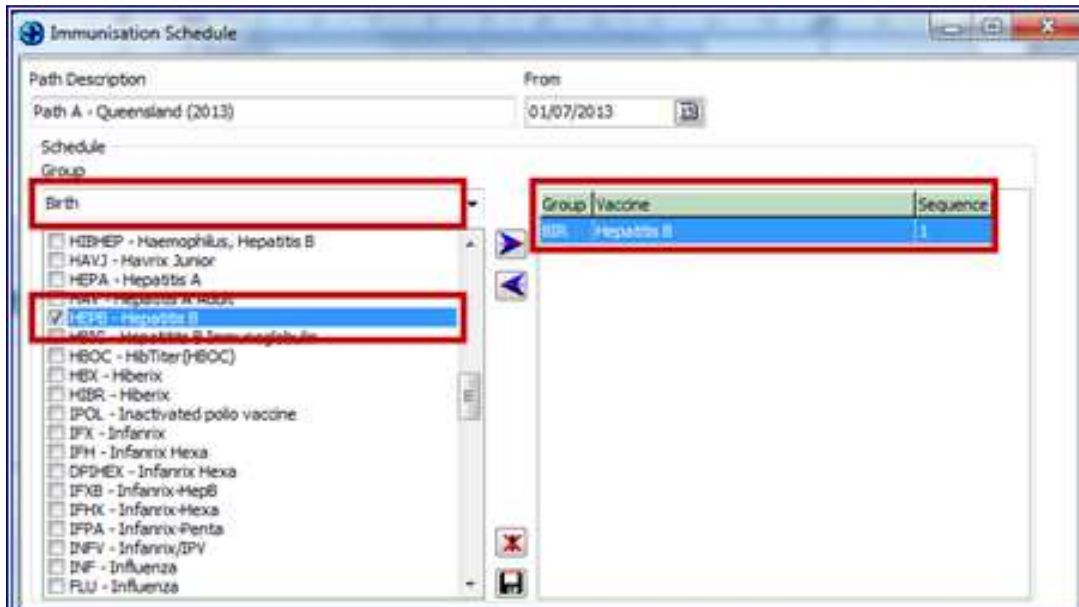
Group	Vaccine	Sequence

Note: You need to alter the Age Range each time to add/exclude vaccines to the list to the right.

Then use the right arrow icon  to move the selected **Vaccine** to appear on the right hand side of the screen.

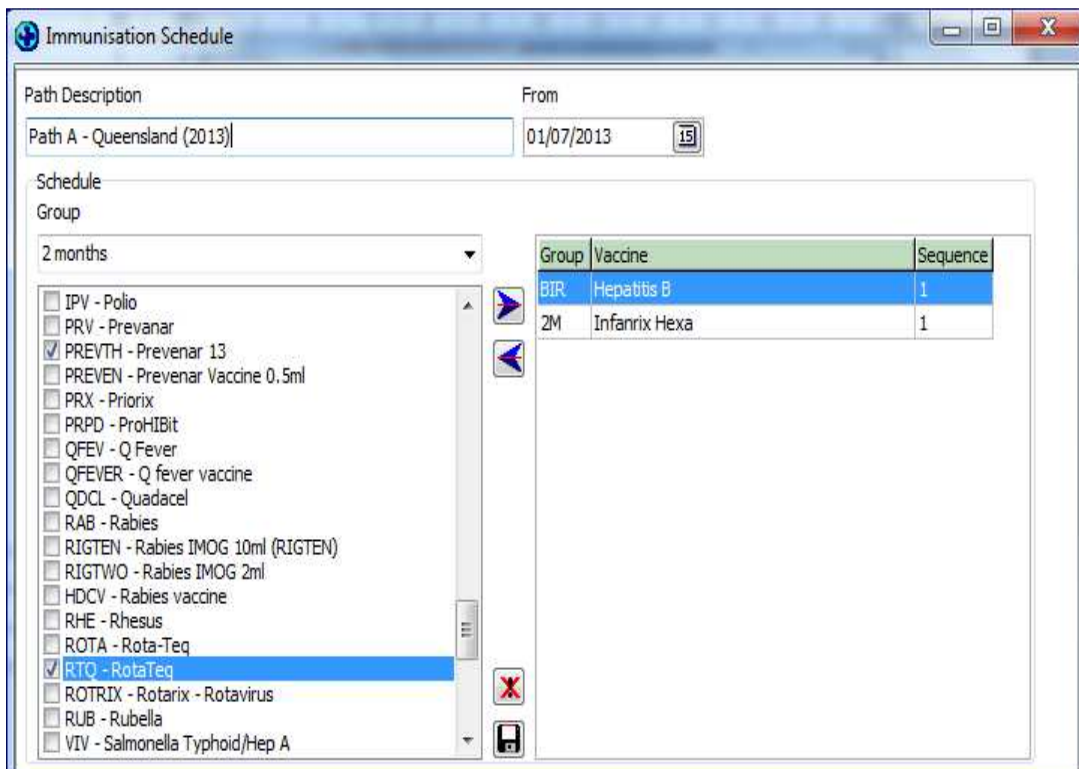
If a vaccine selection has been made in error, use the  icon to remove it from the right hand side of the screen.

Note: From the example below, we have selected **BIRTH** from the drop down list, and have then selected/ticked the **Hepatitis B** vaccine directly from the vaccine list below.



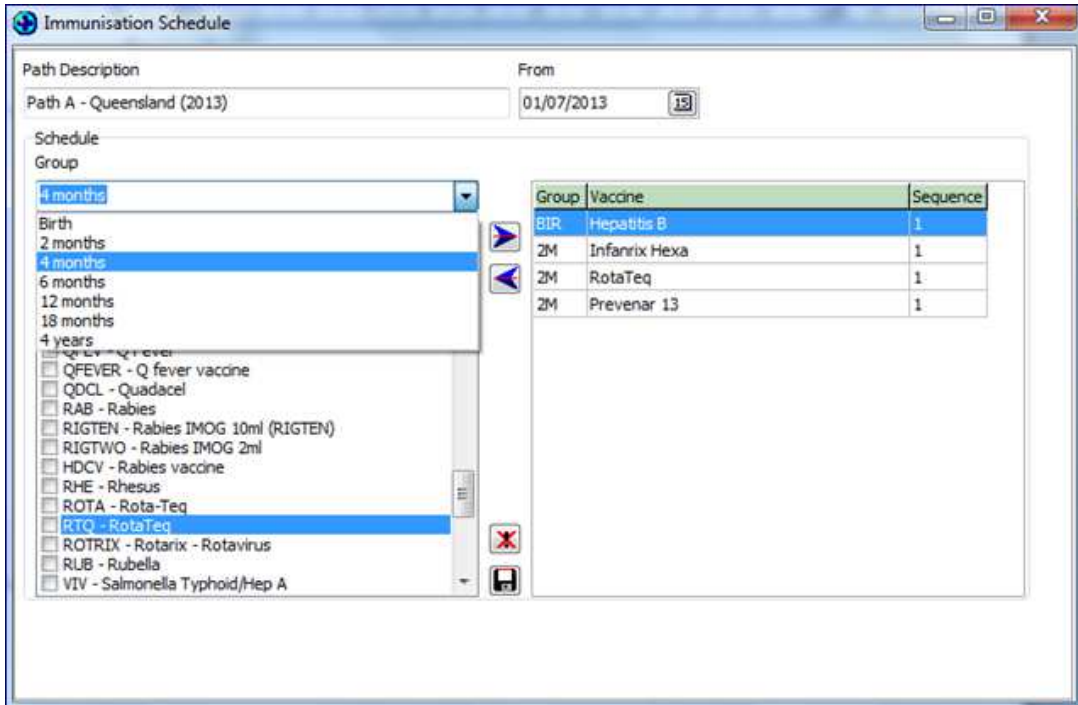
- The next **Age Range** is **2 Months**. In the screenshot below, we have added the **Infanrix Hexa** to the schedule for **2 Months** already (shown on the right hand side of the screen).

We have ticked the two vaccines on the left hand side of the screen in readiness to move them over to be included in the **2 Months** vaccines.



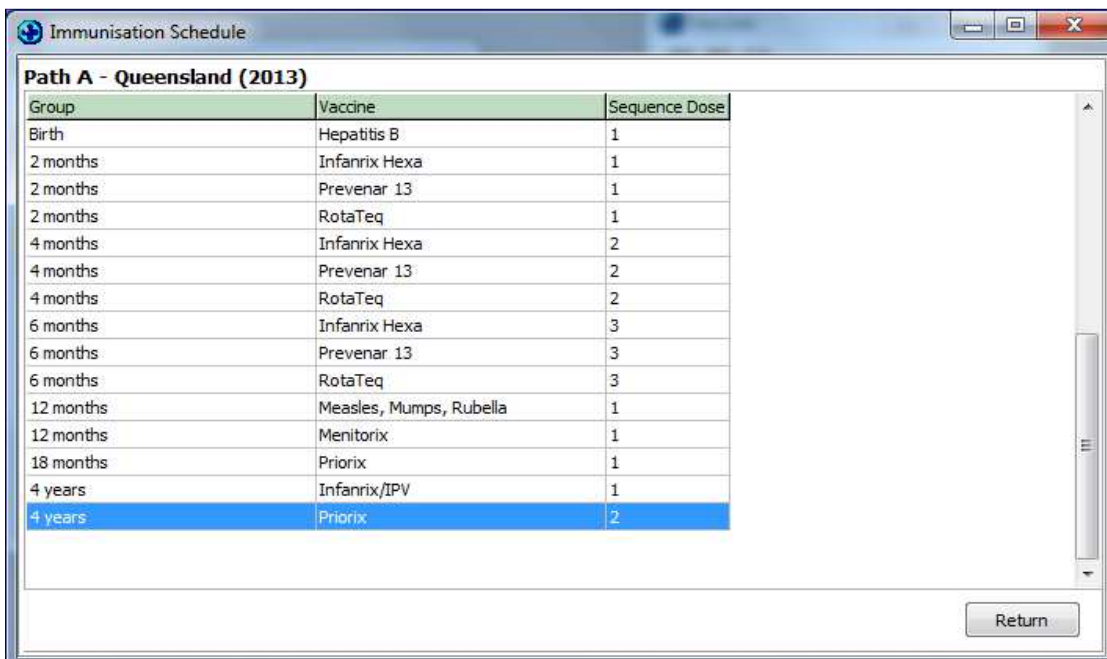
- The next **Age Range** is **4 Months**, so we will need to look at is the **4 Month** from the **Drop Down** menu option.

Work your way through the list – using the **Drop Down** arrow to select the next appropriate **Age Range**, as shown in the next screenshot example.



- Continue to work through the Age Range, and add the required vaccines to the right hand side of the screen.

The end result (continuing on from the Queensland example) will result in the final screen showing the new entries as shown in the **sample** screenshot below.



Appendix A

Standard Vaccines

Vaccine/Brand Name	Vaccine Code	Max doses
ActHIB	PRPT	4
CDT - combined diphtheria, tetanus	CDT	4
Comvax	CMX	3
Engerix B (paediatric)	ENGP	3
Generic Diphtheria	GNDIP	4
Generic DTPa	DTPA	4
Generic HBV	HBV	3
Generic Hepatitis B	GNHEP	3
Generic HIB	GNHIB	3
Generic Measles	GNMEA	3
Generic Meningococcal C	GNMEN	3
Generic MMR	MMR	3
Generic Mumps	GNMUM	3
Generic (Monovalent) Pertussis	P	5
Generic Pneumococcal	GNPNE	3
Generic Poliomyelitis	GNPOL	4
Generic Rubella	GNRUB	3
Generic Tetanus	GNTET	4
Generic Varicella-Zoster	GNVAR	1
HBVAX II (paediatric)	HBVP	3
Hiberix	HBX	4
HibTITER	HBOC	4
Infanrix	IFX	4
Infanrix-HepB	IFXB	3
Infanrix Hexa	IFHX	3
Infanrix-IPV	IFIP	4
Infanrix Penta	IFPA	3
IPOL - inactivated polio vaccine	IPV	4
Meningitec	MENTEC	3
Menitorix	MNTRX	3
Menjugate	MENJUG	3
MMR II	MMRCSL	3
Neis Vac-C	NEISVC	3
Oral Polio (Polio Sabin)	OPV	4
Pediacel	PDCL	4
PedvaxHIB	PRPOMP	3
Poliacel	PLCL	4
Prevenar 7	PRVNR	3
Prevenar 13	PRVTH	4
Priorix	MMRSKB	3
Priorix-Tetra	PRXTET	3
ProHIBit	PRPD	4
ProQuad	PROQAD	3
Quadracel	QDCL	4
Rotarix	ROTRIX	2
RotaTeq	ROTTEQ	3
Synflorix	SYNFLX	4

Tripacel	TCL	4
Triple Antigen	DTP	4
Varilrix	VLRIX	1
Varivax	VRVAX	1

Non-Standard Vaccines

Vaccine/Brand Name	Vaccine Code	Max doses
Agrippal	AGRPAL	8
Avaxim	AVAXM	3
BCG – tuberculosis	BCG	1
Fluarix	FLRIX	8
Fluvax	FLUVAX	8
Fluvax Junior	FVXJNR	8
Fluvirin	FLVRN	8
Generic Hepatitis A	GNHPA	3
Generic Influenza	GNFLU	8
Generic Japanese Encephalitis	GNJEN	4
Havrix Junior	HAVJ	3
Influvac	INFLUV	8
JE-VAX	JEVAX	4
Mencevax ACWY	MENVAX	3
Menomune	MENUME	3
Panvax	PANVAX	8
Twinrix Junior	HATWNJ	3
Vaqta Paediatric/Adolescent formulation	HAVAQ	3
Vaxigrip	VAXGRP	8
Vaxigrip Junior	VGRJNR	8

Sub-Population Vaccines

Vaccine/Brand Name	Vaccine Code	Max doses
Pneumovax 23	PNEUMO	1

Queensland Providers Only

Vaccine/Brand Name	Vaccine Code	Max doses
ADT	ADT	5
Engerix B adult	ENGBA	3
HBVaxII (thiomersal free)	HBVXII	3
HBVaxII adult	HBVXA	3
Hepatitis B Immunoglobulin	HBIG	1
Q fever vaccine	QFEVER	1
Rabies IMOG 10ml	RIGTEN	3
Rabies IMOG 2ml	RIGTWO	9
Rabies vaccine	HDCV	5
Tet-tox	TET	3

If you have any queries with the above process, or experience any difficulty in setting up your **Immunisation Schedule**, please contact the **Medtech Helpdesk on 1800 148 165**