

Release Notes

Medtech32 Australia

ICPC-2 PLUS Update

April 2016



These Release Notes contain important information for Medtech32 users. Please ensure that they are circulated amongst all your relevant staff. We suggest that they are filed safely for future reference.

Table of Contents

Introduction	3
Pre-requisites	4
Installation.....	5
New Classification Codes	7
Modified Classification Codes	9
Inactivated Classification Codes And corresponding Replacement Codes	10
New ICPC Codes in PEN CAT Category	11
Modified ICPC Codes in PEN CAT Category	11

Introduction

These release notes provide an overview on how to apply the **April 2016 ICPC-2 PLUS Update** for **Medtech32 ICPC-2 PLUS** Subscribers.

IMPORTANT NOTE

WARNING: It is HIGHLY recommended to employ ONLY qualified system engineers when performing ANY installation and upgrade. The consequences of ruining a database during an upgrade could possibly lead to data corruptions, and as a result – data loss and systems downtime.

If in doubt, please consult with your IT technician/service provider, or contact one of the Medtech Channel Partners listed on our web site:

<http://www.medtechglobal.com/au/support-au/channel-partners-au/>

IMPORTANT NOTE FOR BRIEFCASING

Changes from this Update will NOT be applied to the Briefcasing laptops UNTIL a **COMPLETE CHECK-OUT** has been run.

IMPORTANT: ALL Briefcasing laptops with OUTSTANDING Briefcased data MUST be checked-in PRIOR TO running a complete check-out.

Alternatively, if it is not feasible to run a complete check-out soon, you MUST install this Update separately on EACH Briefcasing laptop by following the same instructions in the "Installation" section below.

Pre-requisites

Please review the following pre-requisites and ensure they are met prior to running the Update:

- This Update can ONLY be run by **CURRENT** ICPC-2 PLUS Subscribers.

NOTE: For subscriptions enquiries, please contact the Family Medicine Research Centre at the University of Sydney on **02 9354 0616**.

- Ensure the person(s) who will be performing the upgrade have **READ THROUGH** these notes.

IMPORTANT: This document contains valuable information that, if not read, could seriously affect the upgrade progress and/or possible down time of your network.

- Ensure you are ALWAYS logged onto Windows with **ADMINISTRATIVE RIGHTS** when performing ANY installation, update, or maintenance tasks.
- **"User Account Control" (UAC)** MUST be **DISABLED** as a policy across ALL Server and Client computers that are running on **Windows Vista or Windows 7 or Windows 2008 or Windows 2008 R2**.
- To avoid unnecessary problems during installation, upgrade, or maintenance, preferably you should ALWAYS log onto Windows in **"Console Mode"** – i.e. not through Remote Desktop Connection, Terminal Services, or Citrix.
- Ensure you have a **COMPLETE** backup of ALL databases located in the MT32\Data directory.
- Ensure ALL users (including remote users) have **LOGGED OUT** of Medtech32 and ALL services (e.g. ManageMyHealth SMS Communicator), scheduled utilities (e.g. Message Transfer Utility, Auto Scan from Folder), backup or maintenance tasks (e.g. Interbase Backup Scripts) that require access to the databases have been **STOPPED**.
- Ensure the **LAST** Database you have logged in **LOCALLY** on the Medtech32 Server is the one you would like this update to run.

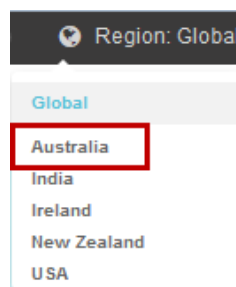
NOTE: If unsure, simply login to the CORRECT Database from the Medtech32 Server, then log out and close Medtech32 before continuing.

Installation

The **ICPC-2 PLUS Update (April 2016)** must be run on the Medtech32 Server machine. The following procedures ONLY need to be run ONCE for EACH practice (or once per database if your practice has multiple databases).

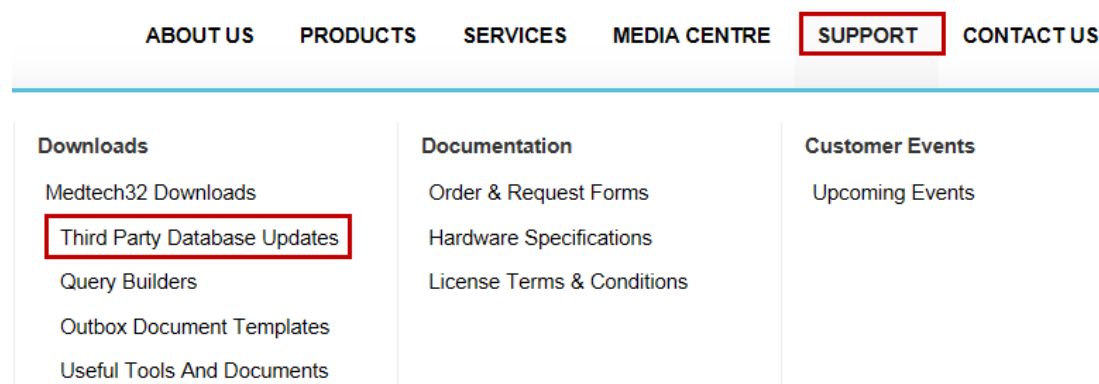
NOTE: If you are uncertain which computer is the Medtech32 Server, please contact your IT technician or service provider who has performed the Medtech32 installation and/or upgrade.

1. Please visit our website at <http://www.medtechglobal.com/global/>.
2. Select **Region: Australia** from the Region dropdown list on the top right corner of the screen.



The **Australia Home Page** will be displayed.

3. Select from the top menu, **Support ► Medtech32 Downloads ► Third Party Database Updates**. The **Medtech32 Third Party Database Updates** page will be displayed.

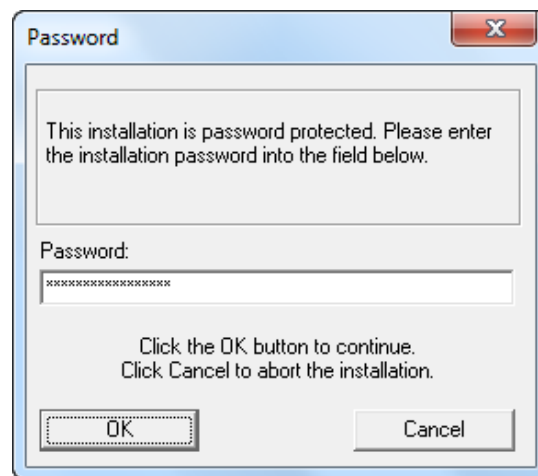


4. Here you will find the **April 2016 ICPC-2 PLUS Update**.
5. Click on the link **April 2016 ICPC-2 PLUS Update** and download the **ICPC-2 plus Update** installer from the **File Attachments** section.

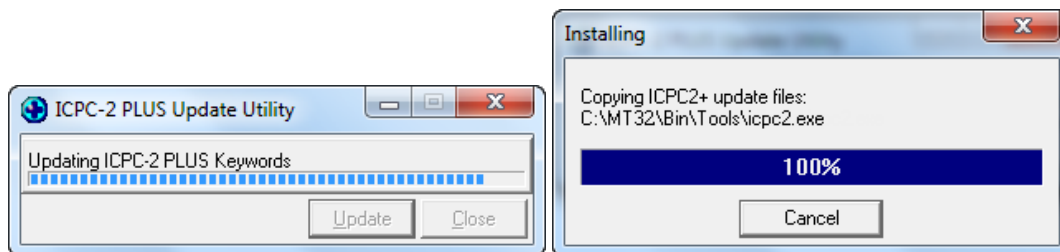
6. If the 'File Download Security Warning' dialogue box appears, select the **Run** option.
7. If the 'Open File Security Warning' dialogue box appears, select the **Run** option.
8. The Update will then begin to run.



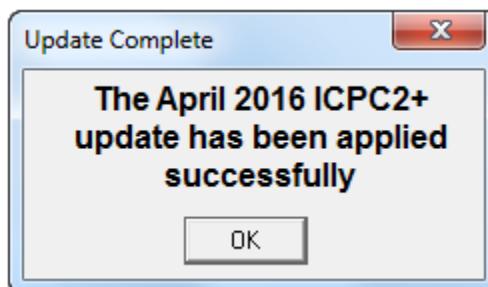
9. The **Password** window will be displayed. Enter the installation password as provided to you by Medtech, and then select the **OK** button to continue the update.



10. The **ICPC-2 plus Update Utility** window and progress bar will be displayed.



11. Once the Update has successfully completed, the following screen will be displayed.



12. Click on the **OK** button to exit the Update.

New Classification Codes

The below detailed list of new Classification Codes that will be included by this Update:

New ICPC-2 Plus Code	Term description
A31034	Check up;sexual health
A33063	Test;MMR antibodies
A41030	Ultrasound;guided;injection
A41031	Ultrasound;guided;biopsy
A41032	CT scan;guided;injection
A41033	CT scan;guided;biopsy
A41034	X-ray;guided;injection
A41035	X-ray;guided;biopsy
A44054	Immunisation;herpes zoster
A45042	Advice/educat;dose admin aid
A62031	Order/supply;dose admin aid
A62032	Admin;disability parking form
A67029	Referral;breast surgeon
A67030	Referral;hand surgeon
B82015	Anaemia;G6PD deficiency
D29025	Spasm;cardio-oesophageal
D29026	Spasm;oesophageal
D41034	Ultrasound;biliary tract
D41035	MRCP
D54019	Repair;cleft lip
D54020	Repair;cleft palate
D81014	Cleft;palate
D81015	Cleft;lip
D81016	Oesophageal pouch
D81017	Diverticulum;oesophageal
D83039	Disease;parotid gland
D83040	Disease;salivary gland
D83041	Disease;tongue
D83042	Disease;mouth
D83043	Disease;lip
D84024	Oesophagitis;eosinophilic
D86012	Ulcer;peptic;perforated
D92005	Diverticulitis

D92006	Diverticulosis
F72013	Rosacea;eyelid(s)
F99064	Disease;retinal vein
F99065	Disease;retinal artery
K07014	Oedema;ankles
K07015	Oedema;feet
L87037	Fibromatosis;musculoskeletal
L87038	Intersection syndrome
L87039	Repetitive strain syndrome
P19042	Abuse;drug(s);methamphetamine
P29040	Addiction(s)
R74018	Pharyngolaryngitis
U99047	Obstruction;urinary tract
W34011	Test;NIPT
W66005	Referral;lactation support
X29010	Concern;appearance;genital;F
Y29016	Concern;appearance;genital;M
Y41013	MRI;prostate
Y52010	Transurethral resect prostate
Y52011	Prostatectomy
Z29027	Problem(with);carer of patient

Modified Classification Codes

The below detailed list of Classification Codes that have been modified by this Update:

Old ICPC-2 Plus Code	Old ICPC-2 Plus Description	New ICPC-2 Plus Code	New ICPC-2 Plus Description
B83008	Purpura;fulminant	B83008	Purpura;fulminans
D85003	Ulcer;perforated;duodenal	D85003	Ulcer;duodenal;perforated
F05025	Eyestrain	F05025	Eye strain
H29001	Cracking;ear	H29001	Crackling;ear
S76010	Cellulitis;orbital	S76010	Cellulitis;periorbital
S79018	Fibromatosis	S79018	Fibromatosis;skin

Inactivated Classification Codes And corresponding Replacement Codes

Inactivated Classification Codes that have to be mapped by the user to use as an equivalent of the Inactivated Classification Codes by this updates are listed below:

Inactive term	Term description	Replacement code	Term description
D13003	Jaundice;change in skin	D13001	Jaundice
B74011	Carcinoma;bone;marrow	B74005	Neoplasm malig;bone;marrow
B74010	Carcinoma;blood	B74004	Neoplasm malig;blood
B74013	Carcinoma;spleen	B74006	Neoplasm malig;spleen
B74012	Carcinoma;lymphatics	B74007	Neoplasm malig;lymphatics
F05005	Dysfunction;vision	F05007	Problem;vision
F13008	Abnormal;sensation;vision	F29007	Sympt/complaint;eye
D88001	Appendix;perforated;acute	D88002	Appendix;perforated
D87009	Gastritis;regional	D87006	Gastritis
D73006	Intestinal grippe	D73004	Gastric influenza
D05005	Itching;rectal	D05002	Itching;perianal
H99003	Ischaemia;inner ear	H99005	Disease;ear
D41013	Ultrasound;gallbladder	D41034	Ultrasound;biliary tract
A50012	Refill;Webster pack	A62031	Order/supply;dose admin aid
D83024	Disease;parotid glan ex mumps	D83039	Disease;parotid gland
D83025	Disease;salivary glan ex mumps	D83040	Disease;salivary gland
D83029	Disease;tongue/mouth/lip	D83042	Disease;mouth
U52010	Transurethral resect prostate	Y52010	Transurethral resect prostate
U52007	Prostatectomy	Y52011	Prostatectomy
D84014	Oesophageal pouch	D81016	Oesophageal pouch
D84009	Spasm;cardio-oesophageal	D29025	Spasm;cardio-oesophageal
D84010	Diverticulosis;oesophagus	D81017	Diverticulum;oesophageal
D84005	Spasm;oesophageal	D29026	Spasm;oesophageal
L99078	Repetitive strain syndrome	L87039	Repetitive strain syndrome

New ICPC Codes in PEN CAT Category

The ICPC Codes that have been included in the PEN CAT category:

NIL

Modified ICPC Codes in PEN CAT Category

The ICPC Codes that have been modified in the PEN CAT category:

NIL

Should you require any assistance, please do not hesitate to contact the Medtech Helpdesk via:

- Medtech32 application [Help ► Contact Support]
- Email to support@medtechglobal.com
- Fax to 03 9690 8010 Attn: Medtech Support
- Phone on 1800 148 165