



Medtech32 Australia ICPC-2 PLUS Update

(April 2015)

Release Notes



This document contains important information for all Medtech32 users.
Please ensure the Release Notes are circulated amongst all your staff.
We suggest these should be filed safely for future reference.

Table of Contents

ICPC April 2015

For further information on this release, or any other queries regarding the **ICPC-2 PLUS Update (April 2015)**, please contact the **Medtech Helpdesk** on **1800 148 165 → Option 1**, or email support@medtechglobal.com.

Prerequisites	3
Introduction	4
Installation.....	5
New Classification Codes	7
Modified Classification Codes	8
Inactivated Classification Codes	8
New ICPC Codes in PEN CAT Category.....	8
Modified ICPC Codes in PEN CAT Category	8

Prerequisites

Please review the following prerequisites and ensure they are met prior to running the update:

- This update can ONLY be run by **CURRENT** ICPC-2 PLUS Subscribers

Note: For subscriptions enquiries, please contact the **Family Medicine Research Centre at the University of Sydney** on **02 9354 0616**.

- Ensure the person(s) who will be performing the upgrade have **READ THROUGH** these notes.

IMPORTANT: This document contains valuable information that, if not read, could seriously affect the upgrade progress and/or possible down time of your network.

- Ensure you are ALWAYS logged onto Windows with **ADMINISTRATIVE RIGHTS** when performing ANY installation, update, or maintenance tasks.
- **"User Account Control" (UAC)** MUST be **DISABLED** as a policy across ALL Server and Client computers that are running on **Windows Vista or Windows 7 or Windows 2008 or Windows 2008 R2**.
- To avoid unnecessary problems during installation, upgrade, or maintenance, preferably you should ALWAYS log on to Windows in **"Console Mode"** – i.e. not through Remote Desktop Connection, Terminal Services, or Citrix.
- Ensure you have a **COMPLETE** backup of ALL databases located in the MT32\Data directory.
- Ensure ALL users (including remote users) have **LOGGED OUT** of Medtech32 and ALL services (e.g. ManageMyHealth SMS Communicator), scheduled utilities (e.g. Message Transfer Utility, Auto Scan from Folder), backup or maintenance tasks (e.g. Interbase Backup Scripts) that require access to the databases have been **STOPPED**.
- Ensure the **LAST** Database you have logged in **LOCALLY** on the Medtech32 Server is the one you would like this update to run.

Note: If unsure, simply login to the Medtech32 Server as normal, then log out and close Medtech32 before continuing.

Introduction

These release notes provide an overview on how to apply the **April 2015 ICPC-2 PLUS Update** for **Medtech32 ICPC-2 PLUS** subscribers.

IMPORTANT NOTE

WARNING: It is HIGHLY recommended to employ ONLY qualified system engineers when performing ANY installation and upgrade. The consequences of ruining a database during an upgrade could possibly lead to data corruptions and, as a result, data loss and systems downtime.

If in doubt, please consult with your IT technician/service provider, or contact one of the Medtech Channel Partners listed on our web site:

<http://www.medtechglobal.com/au/support-au/channel-partners-au/>

IMPORTANT NOTE FOR BRIEFCASING

Changes from this Update will NOT be applied to the Briefcasing laptops UNTIL a **COMPLETE CHECK-OUT** has been run.

IMPORTANT: ALL Briefcasing laptops with OUTSTANDING Briefcased data MUST be checked-in PRIOR TO running a complete check-out.

Alternatively, if it is not feasible to run a complete check-out soon, you MUST install this Update separately on EACH Briefcasing laptop by following the same instructions in the 'Installation' section below.

Installation

The **ICPC-2 PLUS Update (April 2015)** must be run on the Medtech32 Server machine. The following procedures ONLY need to be run ONCE for EACH practice (or once per database if your practice has multiple databases).

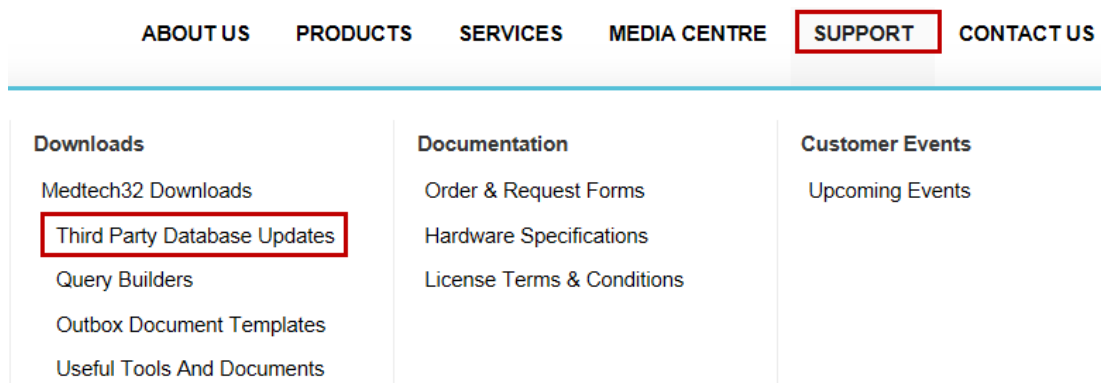
Note: If you are uncertain which computer is the Medtech32 Server, please contact your IT technician or service provider who has performed the Medtech32 installation and/or upgrade.

1. Please visit our website at <http://www.medtechglobal.com/global/>.

Select **Region: Australia** from the Region dropdown list on the top right corner of the screen. The Australia Home Page will be displayed.

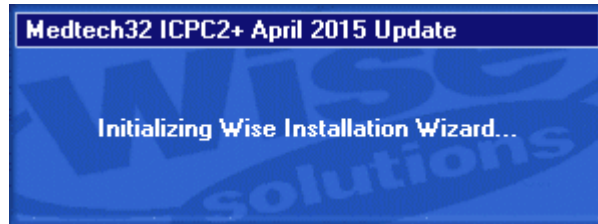


2. Select from the top menu, **Support ► Medtech32 Downloads ► Third Party Database Updates**. The Medtech32 Third Party Database Updates page will be displayed.



3. Here you will find the **April 2015 ICPC-2 PLUS Update**.
4. Click on the link **April 2015 ICPC-2 PLUS Update** and download the ICPC-2 Plus Update installer from the **File Attachments** section.
5. If the **File Download Security Warning** dialogue box appears, select the **Run** option.
6. If the **Open File Security Warning** dialogue box appears, select the **Run** option.

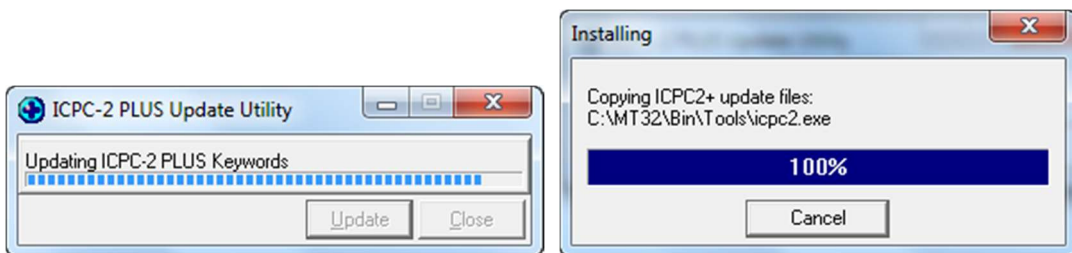
7. The update will then begin to run.



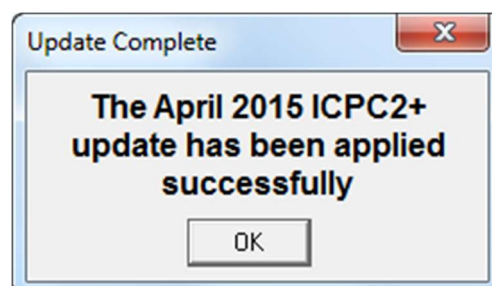
8. The **Password** window will be displayed. Enter the installation password as provided to you by Medtech (via the Fax Notification), and then select the **OK** button to continue the update.



9. The **ICPC-2 Plus Update Utility** window and progress bar will be displayed.



10. Once the Update has successfully completed, the Update Complete screen will be displayed. Click on the **OK** button to exit the Update.



New Classification Codes

New Classification Codes that will be included in this update:

W84032	Large (for);gestat age;foetus
L87036	Greater trochant pain syndrome
W14024	Removal;vaginal ring
L80023	Dislocation;toe(s)
K73016	Dextrocardia
F73015	Retinitis
A31033	Exam;foot/feet
A99027	Disease;mitochondrial
A67028	Referral;foot clinic
F67003	Referral;eye clinic
L99105	Arthropathy;Charcot
X31009	Screening;cervical cancer
D84023	Reflux;laryngopharyngeal
H72005	Otitis media (with);effusion
A78061	Septic shock
R83014	Aspergilloma;lung
X41013	Ultrasound;transvag (not preg)
W41008	Ultrasound;transvag (preg)
A85042	Serotonin syndrome
L55015	Prolotherapy
L34006	Test;arthritis screen
W41009	Hysterosalpingogram
L54105	Replacement;hip;partial
R33012	Test;AFB
T41005	Scan;thyroid;nuclear
A52015	Abdominoplasty
D33032	Test;faeces;multiplex PCR
A30033	Assessment;ADF post discharge
A66020	Referral;podiatrist/chiropraxis
X99043	Cyst;follicular;ovary
T90018	Diabetes;complicated
P43005	Exam;mental state
A51008	Laparotomy

Modified Classification Codes

The following Classification Codes that have been modified by this update are:

A94012 Light (for);gestat age;infant
 A94011 Light (for);gestat age;newborn
 P67004 Referral;psych clinic
 B25004 Contact (with);HIV
 W84019 Small (for);gestat age;foetus
 A94021 Large (for);gestat age;newborn

Inactivated Classification Codes

The Classification Codes that have been inactivated by this update:

NIL

New ICPC Codes in PEN CAT Category

The ICPC Codes that have been included in the PEN CAT category:

NIL

Modified ICPC Codes in PEN CAT Category

The ICPC Codes that have been modified in the PEN CAT category:

OLD PEN CAT CATEGORY	NEW PEN CAT CATEGORY	OLD ICPC-2 PLUS CODE	NEW ICPC-2 PLUS CODE	ICPC-2 PLUS LABEL
Diabetes Type 1	Diabetes Type 2	T89004	T90018	Diabetes;complicated

Should you require any assistance, please do not hesitate to contact
Medtech Helpdesk on 1800 148 165 → Option 1,
 or email support@medtechglobal.com.