



**Medtech32 Australia
ICPC-2 PLUS Update
(April 2014)**

Release Notes



This Release Notes contain important information for all Medtech32 users. Please ensure the Release Notes are circulated amongst all your staff. We suggest these should be filed safely for future reference.

Table of Contents

For further information on this release, or any other queries regarding the ICPC-2 PLUS Update (April 2014), please contact the Medtech Helpdesk on 1800 148 165 → Option 1, or email supportau@medtechglobal.com.

| | |
|-------------------------------------|---|
| Pre-requisites..... | 3 |
| Introduction..... | 4 |
| Installation..... | 5 |
| New Classification Codes | 7 |
| Modified Classification Codes | 8 |

Pre-requisites

Please review the following pre-requisites and ensure they are met prior to running the Update:

- This Update can ONLY be run by CURRENT ICPC-2 PLUS Subscribers.

NOTE: For subscriptions enquiries, please contact the Family Medicine Research Centre at the University of Sydney on 02 9354 0616.

- Ensure the person(s) who will be performing the upgrade have READ THROUGH these notes.

IMPORTANT: This document contains valuable information that, if not read, could seriously affect the upgrade progress and/or possible down time of your network.

- Ensure you are ALWAYS logged onto Windows with ADMINISTRATIVE RIGHTS when performing ANY installation, update, or maintenance tasks.
- "User Account Control" (UAC) MUST be DISABLED as a policy across ALL Server and Client computers that are running on Windows Vista or Windows 7 or Windows 2008 or Windows 2008 R2.
- To avoid unnecessary problems during installation, upgrade, or maintenance, preferably you should ALWAYS log onto Windows in "Console Mode" – i.e. not through Remote Desktop Connection, Terminal Services, or Citrix.
- Ensure you have a COMPLETE backup of ALL databases located in the MT32\Data directory.
- Ensure ALL users (including remote users) have LOGGED OUT of Medtech32 and ALL services (e.g. ManageMyHealth SMS Communicator), scheduled utilities (e.g. Message Transfer Utility, Auto Scan from Folder), backup or maintenance tasks (e.g. Interbase Backup Scripts) that require access to the databases have been STOPPED.
- Ensure the LAST Database you have logged in LOCALLY on the Medtech32 Server is the one you would like this update to run.

NOTE: If unsure, simply login to the CORRECT Database from the Medtech32 Server, then log out and close Medtech32 before continuing.

Introduction

These release notes provide an overview on how to apply the April 2014 ICPC-2 PLUS Update for Medtech32 ICPC-2 PLUS Subscribers.

IMPORTANT NOTE

WARNING: It is HIGHLY recommended to employ ONLY qualified system engineers when performing ANY installation and upgrade. The consequences of ruining a database during an upgrade could possibly lead to data corruptions, and as a result – data loss and systems downtime.

If in doubt, please consult with your IT technician/service provider, or contact one of the Medtech Channel Partners listed on our web site:

<http://www.medtechglobal.com/aus/medtech-online-au/support-3.html>

IMPORTANT NOTE FOR BRIECASING

Changes from this Update will NOT be applied to the Briefcasing laptops UNTIL a **COMPLETE CHECK-OUT** has been run.

IMPORTANT: ALL Briefcasing laptops with OUTSTANDING Briefcased data MUST be checked-in PRIOR TO running a complete check-out.

Alternatively, if it is not feasible to run a complete check-out soon, you MUST install this Update separately on EACH Briefcasing laptop by following the same instructions in the "Installation" section below.

Installation

The ICPC-2 PLUS Update (April 2014) must be run on the Medtech32 Server machine. The following procedures ONLY need to be run ONCE for EACH practice (or once per database if your practice has multiple databases).

NOTE: If you are uncertain which computer is the Medtech32 Server, please contact your IT technician or service provider who has performed the Medtech32 installation and/or upgrade.

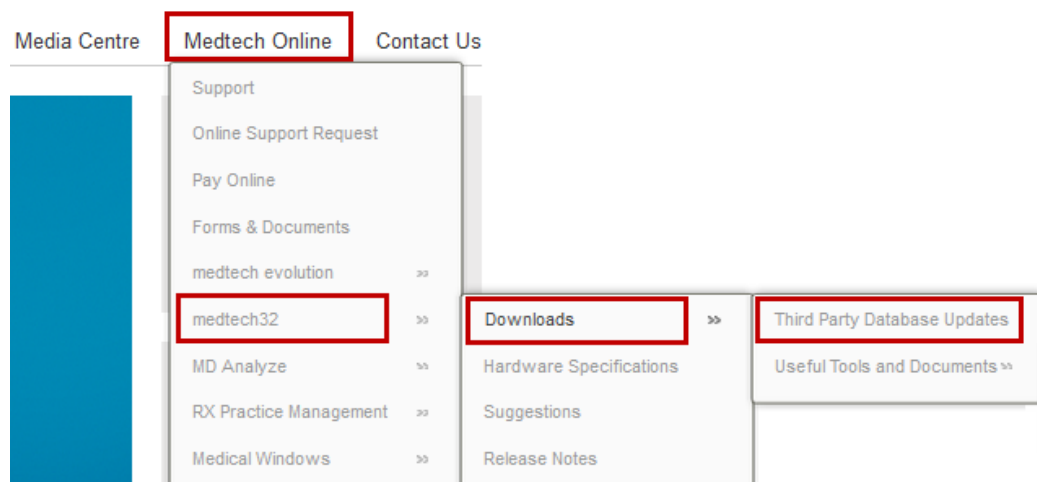
1. Please visit our website at www.medtechglobal.com.
2. Select **Region: Australia** from the Region dropdown list on the top right corner of the screen.



The Australia Home Page will be displayed.



3. Select from the Top Menu, **Medtech Online ► medtech32 ► Downloads ► Third Party Database Updates**. The Medtech32 Third Party Database Updates page will be displayed.



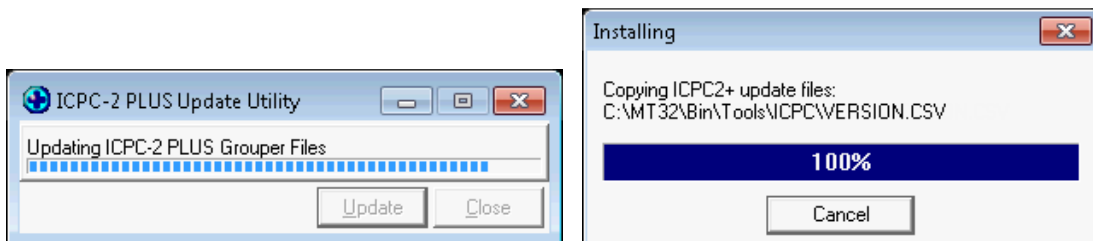
4. Here you will find the **April 2014 ICPC-2 PLUS Update** and the **Release Notes**.
5. Click on the link **April 2014 ICPC-2 PLUS Update**.
6. If the File Download Security Warning dialogue box appears, select the **Run** option.
7. If the Open File Security Warning dialogue box appears, select the **Run** option.
8. The Update will then begin to run.



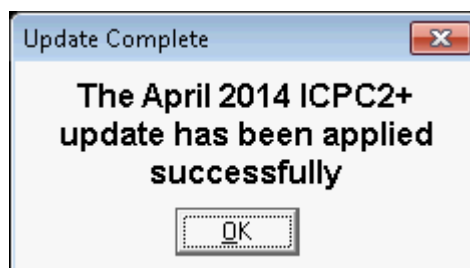
9. The **Password** window will be displayed. Enter the installation password as provided to you by Medtech, and then select the **OK** button to continue the update



10. The **ICPC-2 Plus Update Utility** window and progress bar will be displayed.



11. Once the Update has successfully completed, the Update Complete screen will be displayed. Click on the **OK** button to exit the Update.



New Classification Codes

New Classification Codes that will be included by this Update:

| | |
|--------|-----------------------------|
| X99039 | Dysplasia;endometrial |
| K91016 | Disease;carotid |
| Y16015 | Problem;breast;M |
| S76015 | Cellulitis;leg |
| S11024 | Infection;burn |
| U99046 | Mass;renal |
| A78060 | Bartonellosis |
| A38006 | Test;MTHFR |
| D34011 | Test;gastrin |
| L54104 | Replacement;knee;partial |
| P12004 | Enuresis;nocturnal |
| L87035 | Fasciitis;necrotising |
| D87018 | Reflux;bile |
| D98013 | Cholangitis;sclerosing |
| N85010 | Cyst;arachnoid |
| A86025 | Sensitivity;chemical |
| X99040 | VAIN |
| X99041 | VAIN 1 |
| X99042 | VAIN 2 |
| X77009 | VAIN 3 |
| Y29015 | Bleeding;genital;M |
| K34011 | Test;amiodarone level |
| K34012 | Test;flecainide level |
| A34046 | Test;gentamicin level |
| A34047 | Test;paracetamol level |
| A34048 | Test;tacrolimus level |
| A34049 | Test;vancomycin level |
| S97016 | Ulcer;toe(s) |
| A34050 | Test;mean cell volume |
| B34037 | Test;white cell count |
| A91044 | Abnormal;colonoscopy result |
| R41009 | X-ray;lateral airway |
| A23025 | Risk (of);falls |
| K89016 | Transient global amnesia |

| | |
|--------|-------------------------------|
| S76016 | Cellulitis;foot/feet |
| H41003 | CT scan;ear |
| Y99021 | Abscess;breast;M |
| U31004 | Care (of);ileal conduit |
| X15012 | Cyst;vagina |
| D99065 | Angiodysplasia;intestinal |
| N19018 | Disorder;speech |
| P19041 | Abuse;anabolic steroid |
| T34041 | Test;diabetes review |
| W92034 | Tear;obstetric;fourth degree |
| W54022 | Repair;tear;fourth degree |
| T34042 | Test;T3 |
| K41021 | Coronary artery calcium score |
| U05019 | Urinary voiding;incomplete |
| Z58015 | Counsel;medication compliance |

Modified Classification Codes

The Classification Codes that have been modified by this Update:

| | |
|--------|-----------------------|
| A76008 | Smallpox |
| K90016 | Disease;carotid |
| S10007 | Cellulitis;leg |
| K34005 | Test;digoxin level |
| X81008 | Dysplasia;endometrial |
| R21017 | Tickle (in);throat |
| Y29009 | Problem;breast;M |

Should you require any assistance, please do not hesitate to contact the
 Medtech Helpdesk on 1800 148 165 → Option 1,
 or email supportau@medtechglobal.com.