



## RELEASE NOTES

### Medtech32

### Version 19.9 Build 3168

(April 2011)



#### IMPORTANT NOTE

You **MUST** complete an **Interbase Backup and Restore on ALL Medtech databases PRIOR TO** the installation of the Medtech32 Version 19.9 Build 3168 Update.

Please ensure that the **Restore process is completed** for Interbase after the backup process. **The Restore is crucial to ensuring data integrity.**

It is also **highly recommended** that you ensure that you have a current backup of your Medtech32 directory and databases before upgrade.

Please ensure that you do not attempt to run this upgrade if your practice is required to be up and running in a short amount of time.

Medtech recommends that all Medtech upgrades and database back-up and restore processes are performed by a **Medtech Certified Technician** or your Practice Technician. For a list of Medtech Certified technicians please visit the Medtech Global Website: [www.medtechglobal.com](http://www.medtechglobal.com)

*These Release Notes contain important information for all Medtech Users. Please ensure that they are circulated amongst all your staff. We suggest that these notes are filed safely for future reference.*

## Table of Contents

|   |          |
|---|----------|
| <b>Table of Contents .....</b>                          | <b>2</b> |
| <b>Summary of Changes.....</b>                          | <b>3</b> |
| <b>Installation Prerequisites.....</b>                  | <b>5</b> |
| <b>Medtech 32 Update Installation.....</b>              | <b>6</b> |
| <b>Items included in this Update.....</b>               | <b>7</b> |
| Implementation of \$3 Co-Payment for Prescribing .....  | 7        |
| Setup Staff .....                                       | 7        |
| New Prescription.....                                   | 7        |
| Patient Medications Upload to ManageMyHealth .....      | 9        |
| Patient Classifications Upload to ManageMyHealth .....  | 10       |
| Outbox Document Merge Fields .....                      | 10       |
| New - Today's Medication/s Prescribed .....             | 10       |
| New - Today's Classifications .....                     | 10       |
| Updated – Patient Medication Merge Fields.....          | 10       |
| ACC Rural Healthcare Subsidy Increase .....             | 11       |
| MeNZB Subsidy Removal .....                             | 11       |
| Clinical Event Export Utility .....                     | 11       |
| Briefcasing Advanced Forms .....                        | 11       |
| MIMS Out of Date Alert Message .....                    | 11       |
| MIMS Old Medication Alert Message.....                  | 11       |
| Message Transfer Utility.....                           | 12       |
| Addition of an Audit button to the Settings Tab .....   | 12       |
| Addition of Audit Log screen .....                      | 12       |
| Change in Shortcuts for View and View Log buttons ..... | 13       |
| ManageMyHealth Staff Registration .....                 | 13       |

## Summary of Changes

### 1) Implementation of \$3 Co-Payment for Prescribing

On 1 September 2008, access to \$3 prescription co-payments on subsidised medicines was extended. This has been reflected in this version.

### 2) Patient Medications Upload to ManageMyHealth

This update resolves the issue where a Medication that has been changed from Long Term to Not Long Term in Medtech32 is not reflected in ManageMyHealth™.

### 3) Patient Classifications Upload to ManageMyHealth

This update resolves the issue where a Classification that has been changed from Long Term to Not Long Term in Medtech32 is not reflected in ManageMyHealth™.

### 4) Outbox Document Merge Fields

Merge fields have now been enhanced to show the Date of Prescription for the patient medications, Classifications that have been created at today's date, and medications that have been created at today's date.

### 5) ACC Rural Healthcare Subsidy Increase

There have been increases to the ACC Subsidy prices from 1st May 2011 for Rural Healthcare Providers. This update will provide users with the new subsidy prices with an effective date of 1st May 2011.

### 6) MeNZB Subsidy Removal

This update will set the subsidy for the administration of the MeNZB vaccine to \$0.00 with an effective date of 1st April 2011.

### 7) Clinical Event Export Utility

Currently there is a maximum 10-year rule applied to information extracted by the Medtech Clinical Performance Indicator Report this rule in some scenarios. This 10 year rule has now been removed.

### 8) Briefcasing Advanced Forms

On installation of this update, users will now have the functionality to Briefcase Advanced Forms.

### 9) MIMS Out of Date Alert Message

Users have advised that the 40 day MIMS Out of Date alert message is appearing every time that they prescribe on a Tuesday. This issue has been resolved, and the 40 day alert message will only now appear once on the Tuesday the first time that the user prescribes.

---

#### **10) MIMS Old Medication Alert Message**

In a number of scenarios the 'MIMS Old Medication Alert Message' was appearing for User Defined Drugs after upgrade to Version 19.0. This update resolves this issue.

#### **11) Addition of an Audit button to the Settings Tab**

A button called Audit Log has been added to the 'Details' group box on the Settings Tab in the Message Transfer Utility.

#### **12) Change in Shortcuts for View and View Log buttons**

The View Log button will have its shortcut changed to Alt + W to ensure that it is not the same as the View button.

#### **13) ManageMyHealth Staff Registration Email ID**

The Email ID for Staff Registration has been increased to 256 characters in length from 32.

---

## Installation Prerequisites

Please review the following prerequisites and ensure they are met prior to installation;

### **IMPORTANT NOTE**

You **MUST** complete an **Interbase Backup and Restore on ALL Medtech databases PRIOR TO** the installation of the Medtech32 Version 19.9 Build 3168 Update.

Please ensure that the **Restore process is completed** for Interbase after the backup process. **The Restore is crucial to ensuring data integrity.**

It is also **highly recommended** that you ensure that you have a current backup of your Medtech32 directory and databases before upgrade.

**IMPORTANT:** This documentation contains valuable information that, if not read, could seriously affect the upgrade progress and/or possible down time of your network.

1. Your practice **MUST** be on **Medtech32 Version 19.5 or above**. If you **ARE NOT** on Medtech32 Version 19.5 or above, please **DO NOT** continue.
2. Ensure **ALL** users (including remote users) have logged out of Medtech32 and **ALL** scheduled utilities, backup or maintenance tasks that require access to the databases have been stopped.
3. Please ensure the Medtech32 Scheduler, NIR Directory Monitoring Utility, ACC Directory Monitor, Clinical Audit Tool Action Monitor and ManageMyHealth Online Appointments Manager are shut down prior to running the update.
4. Ensure the person(s) who will be performing the upgrade have read through all of the release documentation and installation instructions.
5. Ensure you are logged onto Windows with Administrative rights when performing **ANY** installation, update, or maintenance tasks.
6. This update **MUST** be run on the Medtech32 Server and all users must be logged out of Medtech32.
7. This update must also be run on any laptop that is used for Briefcasing.

## Medtech 32 Update Installation

Please ensure that you do not attempt to run this upgrade if your practice is required to be up and running in a short amount of time as this upgrade could take some time.

### IMPORTANT NOTE

You **MUST** complete an **Interbase Backup and Restore on ALL Medtech databases PRIOR TO** the installation of the Medtech32 Version 19.9 Build 3168 Update.

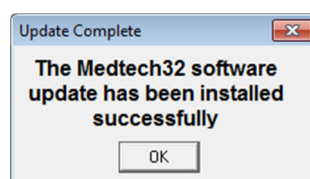
Please ensure that the **Restore process is completed** for Interbase after the backup process. **The Restore is crucial to ensuring data integrity.**

It is also **highly recommended** that you ensure that you have a current backup of your Medtech32 directory and databases before upgrade.

1. Ensure that you are running **Version 19.5** or above of Medtech32. This can be checked by logging into Medtech32 and selecting **Help ► About Medtech32** (see pre requisites above).
2. Visit our website at [www.medtechglobal.com](http://www.medtechglobal.com).
3. Select "New Zealand" in the region drop down (top right hand side of the window).
4. Select menu, **Medtech Online ► Medtech32 ► Downloads**. The New Zealand Medtech32 Updates page will be displayed.
5. Here you will find the **Version 19.9 Build 3168 Update (April 2011)**.
6. In the **File Download Security Warning** dialogue box, select **Run**.
7. In the **Open File Security Warning Dialogue** box, select **Run** option.
8. The installation screen will appear.



9. The installation process will begin.
10. Once the update is completed, the following message will be displayed.



## Items included in this Update

### Implementation of \$3 Co-Payment for Prescribing

On 1 September 2008, access to \$3 prescription co-payments on subsidised medicines was extended.

Effectively, this means that the patient's eligibility criteria has widened to all people eligible for publicly funded health and disability services and the patient no longer has to be enrolled in a PHO to be eligible.

**Note:** All Patients who are a NZ Resident or Eligible NZ Resident will be eligible for Publicly funded health and disability services.

However, the prescriber/provider from whom the prescription is obtained must also be eligible to code the prescription for a \$3 co-payment.

### Setup Staff

Setup ► Staff ► Members

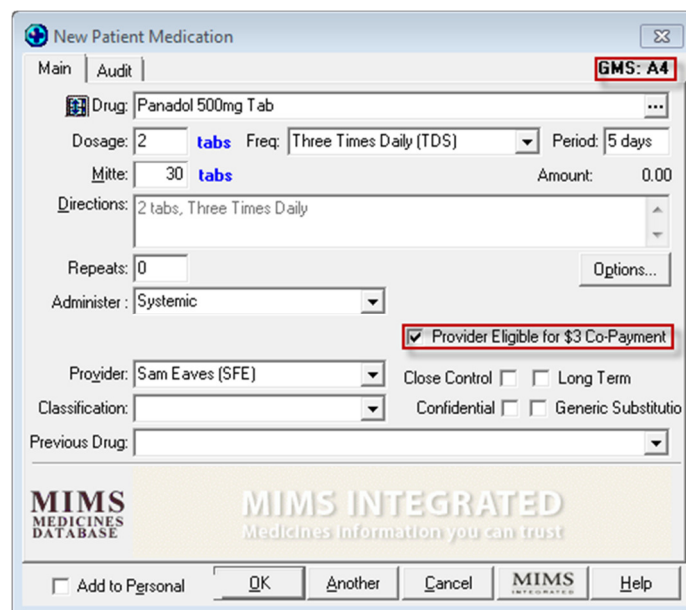
A new check box "Eligible to Code the Prescription for a \$3 Co-Payment" has been added to the Provider Messages tab of the Staff Setup.

This option will be ticked by default on installation of this update. Selecting this option will update the patient category on the patient prescriptions.

### New Prescription

Module ► Clinical ► New Prescription

The Main tab on the New Patient Medication screen will be modified to include a 'Provider Eligible for \$3 Co-Payment' check box and the New Patient Medication screen will be modified to include a GMS indicator.



The default value of the 'Provider Eligible for \$3 Co-Payment' check box will be set by the value of the 'Eligible to Code the Prescription for a \$3 Co-Payment' check box on the Provider Messages tab on the View Staff screen.

User can also select this option manually and it will automatically update the Patient's GMS category.

When a script is generated, the GMS category will be displayed on the script when the script is printed.

**Dr Sam Entwistle**

NZMC Reg No. 12345

Item Count:   
Subsidy Card:

**Mr Sheryl Sales**

234 St Georges Bay Rd, Viaduct, AUCKLAND 1234

GMS: A4

DOB: 5 Jul 1978

NHI: BAB2345

**Rx**

**HFA**

**1 Apr 2011**

**Dispense stat list medicines once only unless endorsed close control**

**Panadol 500mg Tab**

Sig: 2 tabs, Three Times Daily

Mitte: 30 tabs

If the 'Eligible to Code the Prescription for a \$3 Co-Payment' check box is selected, the patient category (GMS) shown on a script will be updated as follows:

| Patient Category | Patient Category Shown on Script |
|------------------|----------------------------------|
| Y1 or Y3         | Y4                               |
| Y1Z or Y3Z       | Y4Z                              |
| J1 or J3         | J4                               |
| J1Z or J3Z       | J4Z                              |
| A1 or A3         | A4                               |
| A1Z or A3Z       | A4Z                              |

**Note:** All Patients who are a NZ Resident or Eligible NZ Resident will be eligible for Publicly funded health and disability services.



## Patient Classifications Upload to ManageMyHealth

Module ► Clinical ► Patient Classifications

This update resolves the issue where a Classification that has been changed from Long Term to Not Long Term in Medtech32 is not reflected in ManageMyHealth™.

Any Classification that has been changed from Long Term to Not Long Term in Medtech32 using the Menu, Right Click or Icon on the Patient Classifications screen will now show the status change on ManageMyHealth™.

## Outbox Document Merge Fields

Setup ► In/Out Box ► Out Box Document ► Document Designer

### New - Today's Medication/s Prescribed

**Merge Field:** [FRN\_TODAYS\_RX]

**Description:** Pat Rx Today with dose and freq

The merge field will display a list of all the Medications that have been created at Today's Date for the selected patient when completing a Document.

**Example:**

01 April 2011 Diclofenac Sodium 75mg/3ml Inj - 2 vials, Three Times Daily - 36

01 April 2011 Amoxicillin 125mg/1.25ml Oral Drops - 5 mls, Three Times Daily - 75

### New - Today's Classifications

**Merge Field:** [FRN\_TODAYS\_DX]

**Description:** Pat Class. Today

The merge field will display a list of all the Classification that have been created at Today's Date for the selected patients when completing a Document.

**Example:**

Diabetes monitoring admin

Asthma control step

## Updated – Patient Medication Merge Fields

Medtech32 currently provides the following merge fields to present Patient Medication data for the user in Documents.

- [FRN\_CURRENT\_RX] – Patient Current Med.
- [FRN\_CURRENT\_RX\_5M] – Patient Current Med. (5 mths)
- [FRN\_CURRENT\_RXS] – Patient Current Med. with Dose.
- [FRN\_CURRENT\_RXS\_5M] – Patient Current Med. with Dose (5 mths)
- [FRN\_LONGTERM\_RXS] – Patient L.T. Med. with Dose
- [FRN\_LONGTERM\_DSFAQ] – Patient L.T. Med. with Dose and Freq

These merge fields have now been enhanced to show the Date of Prescription for the patient medications displayed when using any of the merge fields listed above.

---

**Current Output:**

Celiprolol Hydrochloride 200mg Tab - Take 1 tablet, once a day for 30 days - 30  
Morphine Sulfate 60mg/30ml Inj - 1 vials, As Required

**Expected Output**

14-Dec-2010 Celiprolol Hydrochloride 200Mg Tab - Take 1 tablet, once a day for 30 days - 30  
19-Apr-2006 Morphine Sulfate 60Mg/30MI Inj - 1 vials, As Required

## ACC Rural Healthcare Subsidy Increase

*Setup ► Accounting ► Subsidy*

There have been increases to the ACC Subsidy prices from 1<sup>st</sup> May 2011 for Rural Healthcare Providers. This update will provide users with the new subsidy prices with an effective date of 1<sup>st</sup> May 2011.

## MeNZB Subsidy Removal

*Setup ► Accounting ► Subsidy*

The Ministry of Health have advised that the MeNZB vaccine will no longer be available from 1 April 2011. Therefore no claim for the administration of the MeNZB vaccine from 1 April 2011 will be valid.

This update will set the subsidy for the administration of the MeNZB vaccine to \$0.00 with an effective date of 1<sup>st</sup> April 2011.

## Clinical Event Export Utility

*Utilities ► Linktech ► PHO Clinical Event*

Currently there is a maximum 10-year rule applied to information extracted by the Medtech Clinical Performance Indicator Report this rule in some scenarios. This 10 year rule has now been removed.

## Briefcasing Advanced Forms

*Briefcase Administrator Utility*

On installation of this update, users will now have the functionality to Briefcase Advanced Forms.

## MIMS Out of Date Alert Message

*Module ► Clinical ► New Prescription*

Users have advised that the 40 day MIMS Out of Date alert message is appearing every time that they prescribe on a Tuesday.

This issue has been resolved, and the 40 day alert message will only now appear once on the Tuesday the first time that the user prescribes.

## MIMS Old Medication Alert Message

*Module ► Clinical ► New Prescription*

In a number of scenarios the 'MIMS Old Medication Alert Message' was appearing for User Defined Drugs after upgrade to Version 19.0. This update resolves this issue.

## Message Transfer Utility

Tools ► Message Transfer ► Message Transfer Utility

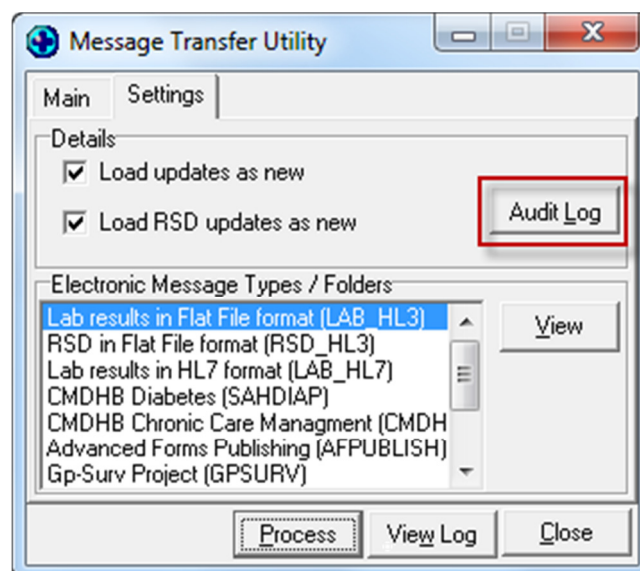
### Addition of an Audit button to the Settings Tab

The Settings Tab in the Message Transfer Utility screen currently has no Auditing function on it to track when users have manually altered the settings on the screen.

A button called **Audit Log** has been added to the 'Details' group box on the Settings Tab in the Message Transfer Utility.

The new Audit Log functionality will be used to capture manual alterations to the **Load updates as new** and **Load RSD updates as new** settings.

The Audit Log button will have a shortcut assigned of **Alt + L**



On clicking the Audit Log button, the Audit Log screen will be displayed to the user.

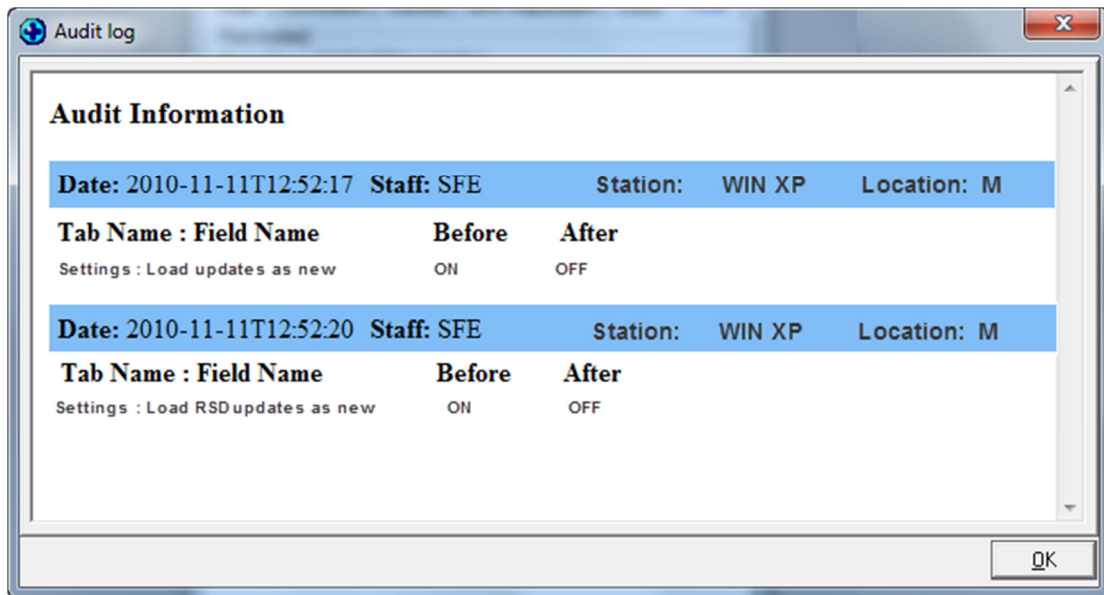
### Addition of Audit Log screen

The new Audit Log functionality will be used to capture manual alterations to the **Load updates as new** and **Load RSD updates as new** settings.

On clicking the Audit Log button, the Audit Log screen will be displayed to the user.

The Audit Log screen will detail for the user, all instances of a manual change being made to the Load updates as new and Load RSD updates as new settings.

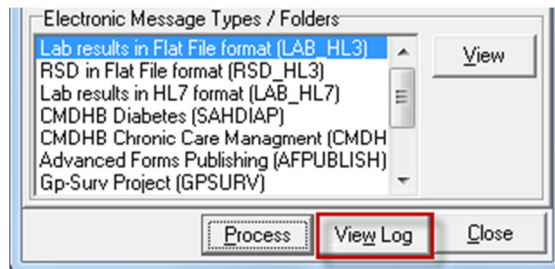
Information will be displayed to the user in the Audit Log screen in the following format:



## Change in Shortcuts for View and View Log buttons

Currently the View and View Log buttons both have the same shortcut assigned to them of Alt + V.

The **View Log** button will have its shortcut changed to **Alt + W** to ensure that it is not the same as the View button.



## ManageMyHealth Staff Registration

*ManageMyHealth ► Setup ► Register Staff for ManageMyHealth*

The Email ID for Staff Registration has been increased to 256 characters in length from 32.

For further information on these new features, or any other queries regarding Version 19.9 Update, please contact Medtech Support on 0800 2 MEDTECH (633 832) - Option 1 or send us a fax, toll free on 0800 MEDTECH (633 832) or email: [nzsupport@medtechglobal.com](mailto:nzsupport@medtechglobal.com).