

# Medtech32 Version 19.2 Update

Version 19.2 is a cumulative patch and includes all changes to the Medtech32 application after release of Version 19.0.

Any practice on Version 19.0 or above can run this update.

## Release Notes



### **IMPORTANT NOTE**

Medtech recommends that all Medtech upgrades and database back-up and restore processes are performed by a Medtech Certified Technician or your Practice Technician. For a list of Medtech Certified technicians please visit the Medtech Global Website: [www.medtechglobal.com](http://www.medtechglobal.com).

*These Release Notes contain important information for all Medtech Users. Please ensure that they are circulated amongst all your staff. We suggest that these notes are filed safely for future reference.*

# Table of Contents

For further information on these new features, or any other queries regarding the Version 19.2 Update, please contact Medtech Support on 0800 2 MEDTECH (633 832) - Option 1 or send us a fax, toll free on 0800 MEDTECH (633 832) or email: [nzsupport@medtechglobal.com](mailto:nzsupport@medtechglobal.com).

<b>Installation Prerequisites</b> .....	<b>3</b>
<b>Version 19.2 Build 2975 Update Installation</b> .....	<b>4</b>
<b>Version 19.2 Build 2975 Update Details</b> .....	<b>6</b>
GST Increase – Effective 1 October 2010 .....	6
Service Fee Update Utility .....	6
Updating Service Fee Values in the Service Utility.....	8
Setup ▶ Accounting ▶ Services.....	10
Audit Log .....	10
Setup ▶ Accounting ▶ Services – GMS Adjustment .....	11
Setup ▶ Accounting ▶ Subsidies .....	12
Setup ▶ Location ▶ Location Settings .....	12
Module ▶ Accounts ▶ New Invoice.....	12
New Invoice Generation and Backdating .....	12
Invoice, Receipt and Statement Printing .....	13
Module ▶ Claims ▶ Finalise.....	15
Medication Alternatives .....	16
Mapping Old Medications in the Medication Alternatives Utility.....	16
Prescribing an Old Medication (using the Medication Alternatives Utility) .....	20
Prescribing where a mapped Medication Alternative exists.....	20
Prescribing where a mapped Medication Alternative does not exist .....	21
Other Prescribing Changes .....	22
General SQL Error when Prescribing.....	22
Data Set Not in Edit Mode Error when Prescribing .....	22
MSD - Work Capacity Medical Certificate .....	23
Clinical Event Export Utility (Smoking Indicators) .....	25
Updating the Clinical Event Export Utility Mapping .....	25
Opening the Clinical Event Export Utility Mapping Screen .....	25
Mapping the Smoking Indicator Values.....	26
1. Click on the Smoking tab at the top of the screen, the Smoking Indicator mapping screens will be displayed.....	26
Mapping Smoking Status .....	27
Mapping Brief Advise .....	29
Mapping Cessation Support.....	29
ADHB and General Referral Forms .....	31
ACC Provider Treatment Triggers .....	31
Advanced Forms Expiry Date Renewal .....	31
<b>Previous 19.1 Update Items</b> .....	<b>32</b>
Repeating of Old Medications.....	32
To disable the ‘Old Medication’ warning message: .....	32
Repeating process with Old Medication Warning disabled:.....	33
Units of Measurement .....	35
Konnnect SureMed Insurance Form .....	35
ManageMyHealth .....	35
ManageMyHealth Inbox Upload.....	35
ManageMyHealth Online Appointments Manager.....	35

## Installation Prerequisites

Please review the following prerequisites and ensure they are met prior to installation;

1. Your practice **MUST** be on **Medtech32 Version 19.0** or above. If you **ARE NOT** on Medtech32 Version 19.0, please **DO NOT** continue.
2. Ensure **ALL** users (including remote users) have logged out of Medtech32 and **ALL** scheduled utilities, backup or maintenance tasks that require access to the databases have been stopped.
3. Please ensure the Medtech32 Scheduler, NIR Directory Monitoring Utility, ACC Directory Monitor, Clinical Audit Tool Action Monitor and ManageMyHealth Online Appointments Manager are shut down prior to running the update.
4. Ensure the person(s) who will be performing the upgrade have read through all of the release documentation and installation instructions.

**IMPORTANT:** This documentation contains valuable information that, if not read, could seriously affect the upgrade progress and/or possible down time of your network.

5. Ensure you are logged onto Windows with Administrative rights when performing **ANY** installation, update, or maintenance tasks.
6. This update **MUST** be run on the Medtech32 Server and all users must be logged out of Medtech32.
7. This update must also be run on any laptop that is used for Briefcasing.

## Version 19.2 Build 2975 Update Installation

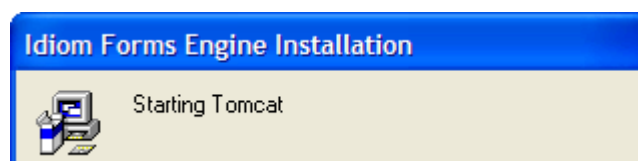
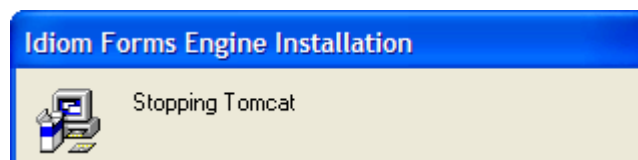
1. Ensure that you are running **Version 19.0 or higher** of Medtech32. This can be checked by logging into Medtech32 and selecting **Help ► About Medtech32** (see pre requisites above).
2. Visit our website at [www.medtechglobal.com](http://www.medtechglobal.com).
3. Select “New Zealand” in the region drop down (top right hand side of the window)
4. Select menu, **Medtech Online ► Medtech32 ► Downloads**. The New Zealand Medtech32 Updates page will be displayed.
5. Here you will find the **Version 19.2 Build 2975 Update**
6. In the **File Download Security Warning** dialogue box, select **Run**.
7. In the **Open File Security Warning Dialogue** box, select **Run** option.
8. The installation screen will appear.



9. The installation process will begin.
10. The Structure Check Utility will run.
11. The Upgrade SQL Utility will run.
12. The installation screen will appear for the Idiom Forms Engine.



13. The Tomcat Service will be stopped and started during the installation of Connected Care.



14. Once the update is completed, the following message will be displayed.



---

## Version 19.2 Build 2975 Update Details

### GST Increase – Effective 1 October 2010

From the 1<sup>st</sup> of October 2010, the Goods and Services Tax (GST) is changing 12.5% to 15%.

Within the Medtech32 application a number of areas are affected by this rate change. These areas include accounting processes, services, subsidies, invoicing, and claims.

**It is very important that you DO NOT alter any of your Subsidy Fees within Medtech32. We will provide you with an update that will work regardless of your Medtech32 version, as soon as the information on these changes is made available to Medtech.**

The Version 19.2 Update provides the necessary application changes for implementation of the GST change.

**Configuration Requirement - Important Note:** This update provides a utility to help with the process of increasing the GST amount to all service fees. You will need to review the utility which displays the current Service Fee list and the new 15% GST Service Fee Rates.

### Service Fee Update Utility

A Service Fee Update Utility has been provided to enable the practice to easily update the Service Fees that are configured in the practice.

The Service Update utility can be accessed by navigating to: **Utilities ▶ Accounting ▶ Service Update**, the following screen will be displayed.

**Service Update**

Select the services to be changed to the new GST rate with an effective date of 1 October 2010 ?

Services

Update	Service Code	Description	Service Fee	Proposed Service Fee	New Service Fee
<input type="checkbox"/>	CACC	ACC Consultation	57.80	59.08	59.08
<input type="checkbox"/>	AF	Administration Fee	5.00	5.11	5.11
<input type="checkbox"/>	BATT	Battery	8.00	8.18	8.18
<input type="checkbox"/>	BS	Bed Stay	120.00	122.67	122.67
<input type="checkbox"/>	R1	Clean/Debride Wound	10.00	10.22	10.22
<input type="checkbox"/>	C	Consultation	100.00	102.22	102.22
<input type="checkbox"/>	CB	Crepe Bandage	5.50	5.62	5.62
<input type="checkbox"/>	ST	Exercise ECG	200.00	204.44	204.44
<input type="checkbox"/>	HTE	Hearing Test	58.00	59.29	59.29
<input type="checkbox"/>	HM	Herbal Medicine	14.00	14.31	14.31
<input type="checkbox"/>	HIRE	Hire Charges	15.00	15.33	15.33
<input type="checkbox"/>	IC	Initial Consultation	90.00	92.00	92.00
<input type="checkbox"/>	LC	Long Consultation	40.00	40.89	40.89
<input type="checkbox"/>	PMEDR	Prov Med Rec	101.25	103.50	103.50
<input type="checkbox"/>	MEDR	Prov Med Record	185.62	189.74	189.74
<input type="checkbox"/>	REF	Referral Consult	95.00	97.11	97.11
<input type="checkbox"/>	REG	Registration Mother	150.00	153.33	153.33
<input type="checkbox"/>	RX	Repeat Prescription	7.00	7.16	7.16
<input type="checkbox"/>	R5	Set Finger/Toe	60.00	61.33	61.33
<input type="checkbox"/>	R6	Set Wrist/Arm	200.00	204.44	204.44
<input type="checkbox"/>	SC	Short Consultation	20.00	20.44	20.44
<input type="checkbox"/>	SU	Suture	2.00	2.04	2.04
<input type="checkbox"/>	R4	Suturing, 10cm plus	70.00	71.56	71.56

Filter to exclude \$0.00 Service Fees

Apply Cancel

The Service Fee Update utility will display for you the Service Code, and Description of all Services in the database.

The Service Fee list by default will only show those items with an amount greater than \$0.00.

If you would like to view all of the service fees (inc. the \$0.00 value fees) then you can remove the tick from the 'Filter to exclude \$0.00 Service Fees' option.

The Service Fee column will display the current service fee amount which is inclusive of GST at 12.5%.

The Proposed Service Fee column will display the current service fee amount which is inclusive of GST at 15%.

The New Service Fee and Proposed Service Fee column will display the same amount initially, however you may wish to review and alter the New Service Fee column to have a value of your choice, i.e to resolve rounding issues.

Once applied the amount set in the New Service Fee column will be the amount of the Service Fee from 1 October 2010.

This utility must be run on or before 1 October 2010 so that changes can automatically take effect on 1 October 2010. If the utility is run prior to 1 October 2010, your current Service Fee value will remain in use and on 1 October 2010, the new Service Fee will automatically be activated when invoicing

## Updating Service Fee Values in the Service Utility

By default, the first time the utility is run, all services with an amount greater than \$0.00 will be displayed and selected (see tick box on the left of the screen). To include zero dollar services, un-tick the “Filter to exclude \$0.00 service fees” option at the bottom of the screen.

You are able to run this utility at any time in the future. The second time the service utility is run and thereafter, only those services not previously selected will be automatically selected for update. However, if you want to make changes to a previously changed service, you can do so by manually selecting it.

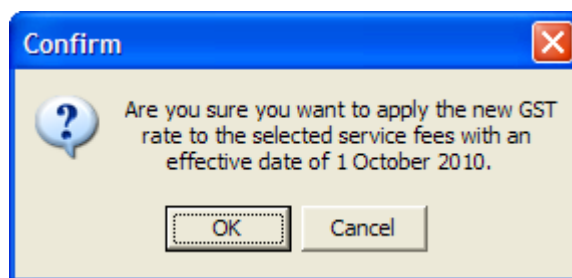
Right clicking in the screen will display selection Select All, Unselect All, and Invert Selection options.

1. Click in the New Service Fee box for each service you wish to change and enter the amount required by your practice.

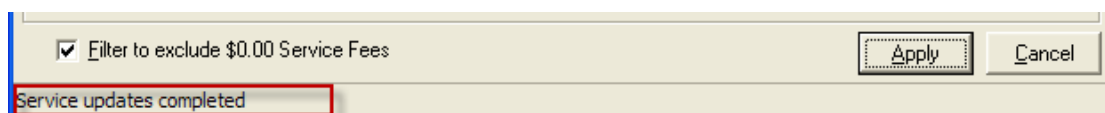
The New Service Fee column can be changed by double clicking inside the New Service Fee box and entering the required amount.

**Important Note:** Your practice may want to round values to the nearest 10 cents for cash accounting purposes. For example the GST calculation would change a \$40 service fee to \$40.89 to account for the increase in GST. We recommend changing this to \$40.90 or \$41.00. However, the amount could be changed to any figure desired by the practice.

2. Make sure all services that you want to change are selected (ticked in the update column).
3. Click on Apply.
4. A confirmation message will appear.



5. Click OK to continue.
6. The Service Fee updates will be applied and the utility will show a ‘Service updates completed’ message at the bottom of the utility screen.



---

7. Click the close window option at the top of the Service Utility screen to exit.

**Important Note:** If you have Service Fees in your database that are used for PHO or DHB programs. You should contact the relevant representative to ensure that the fees are increasing, and to obtain the correct values for update.

## Setup ▶ Accounting ▶ Services

Once you have completed the running of the Service Fee Update utility, any changes to the service fees can be viewed from the **Setup ▶ Accounting ▶ Services ▶ View Service** screen.

The current Service Fee will be displayed and also the New Service Details are displayed showing the effective date of 1 October 2010.

Code:	<input type="text" value="C"/>	
Description:	<input type="text" value="Consultation"/>	
Service Fee:	<input type="text" value="100.00"/>	<b>Current Service Fee (12.5%)</b>
New Service Details		
New Service Fee:	<input type="text" value="102.22"/>	<b>New Service Fee (15%)</b>
Effective Date:	<input type="text" value="01 Oct 2010"/>	<b>Effective Date</b>

## Audit Log

An audit log has been added to the Audit Tab in the Service Setup. This will enable the practice to check for change to the Service Fee, New Service Fee and Effective Date.

Audit Information		
<b>Date:</b>	2010-09-23T13:56:46	<b>Staff:</b> SYS
<b>Tab Name :</b>	<b>Field Name</b>	<b>Before</b> <b>After</b>
Main :	Effective Date	1899-12-30T00:00:00      2010-10-01T00:00:00
Main :	New Service Fee	0                                      102.22
Service Upgrade :	User Override	N/A                                      User Overridden

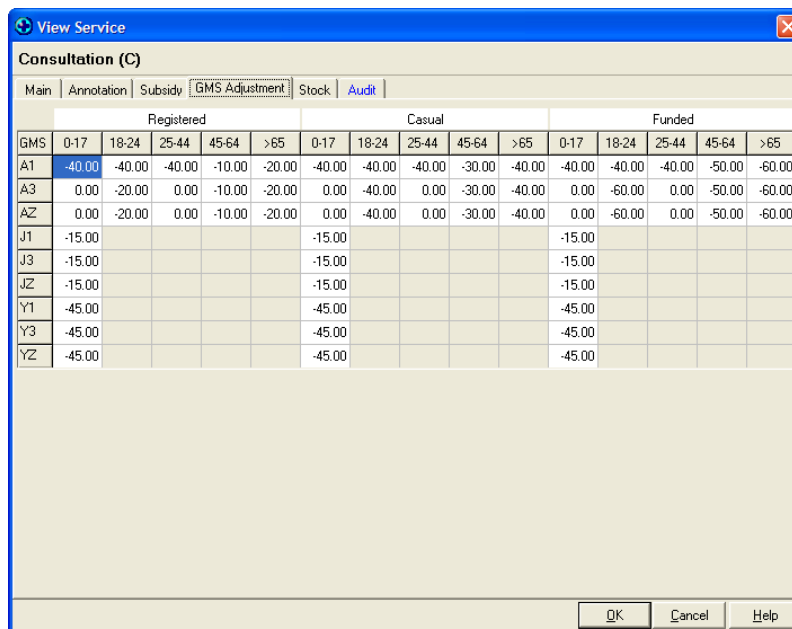
## Setup ▶ Accounting ▶ Services – GMS Adjustment

**Configuration Requirement - Important Note:** A GMS Adjustment may be required to be completed based on the change in your service fees.

The GMS Adjustment can be performed in the usual manner after the Service Fee Utility has been run to update the Service Fee for change in GST.

Should you require assistance to make changes to your GMS Adjustment please contact the Medtech Support Desk.

1. To access the GMS Adjustment screen navigate Setup ▶ Accounting ▶ Services and select the required Service.
2. Click on the GMS Adjustment Tab.



GMS	Registered					Casual					Funded				
	0-17	18-24	25-44	45-64	>65	0-17	18-24	25-44	45-64	>65	0-17	18-24	25-44	45-64	>65
A1	-40.00	-40.00	-40.00	-10.00	-20.00	-40.00	-40.00	-40.00	-30.00	-40.00	-40.00	-40.00	-40.00	-50.00	-60.00
A3	0.00	-20.00	0.00	-10.00	-20.00	0.00	-40.00	0.00	-30.00	-40.00	0.00	-60.00	0.00	-50.00	-60.00
AZ	0.00	-20.00	0.00	-10.00	-20.00	0.00	-40.00	0.00	-30.00	-40.00	0.00	-60.00	0.00	-50.00	-60.00
J1	-15.00					-15.00					-15.00				
J3	-15.00					-15.00					-15.00				
JZ	-15.00					-15.00					-15.00				
Y1	-45.00					-45.00					-45.00				
Y3	-45.00					-45.00					-45.00				
YZ	-45.00					-45.00					-45.00				

3. Enter the GMS Adjustment amount into the required areas for each category and age group.
4. Click OK.

**Important Note:** This must be done for each consultation service (and ACC service if the rate varies for different age groups. This adjustment is made based on practice policy.

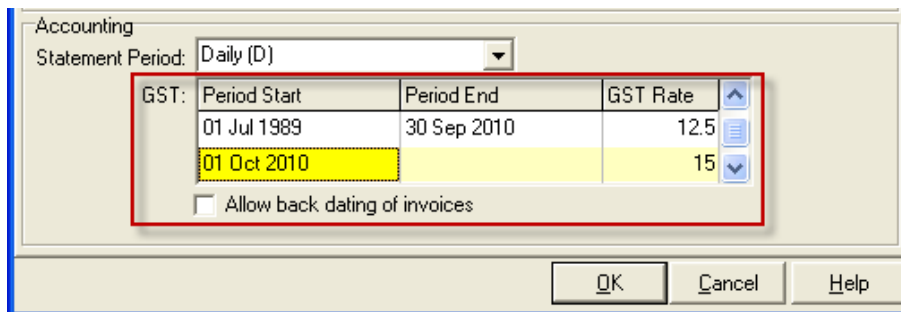
## Setup ▶ Accounting ▶ Subsidies

It is very important that you **DO NOT** alter any of your Subsidy Fees within Medtech32. We will provide you with an update that will work regardless of your Medtech32 version, as soon as the information on these changes is made available to Medtech.

## Setup ▶ Location ▶ Location Settings

The Location Settings screen, Postal and Accounting Details Tab, has been modified to display the current and previous GST rates with the start and end period details.

This is to ensure that the relevant GST values are available to the application for backdating of transactions.



Users are unable to edit the information in this section of the screen.

## Module ▶ Accounts ▶ New Invoice

### New Invoice Generation and Backdating

When generating invoices, the Service Fees on the invoice will be created with a GST amount relative to the period of the invoice according to the Setup ▶ Location ▶ Location Settings – Postal and Accounting Details tab.

For Example:

If your system date is on or before the 1<sup>st</sup> October 2010 and an invoice is created for the current date or backdated, the invoice will be generated with all services fees including a GST portion of 12.5% (Service Fee value in the Setup ▶ Accounting ▶ Services screen)

If your system date is on or after the 1<sup>st</sup> of October 2010 and an invoice is created for the current date, the invoice will be generated with all service fees including a GST portion of 15%. (New Service Fee value in the Setup ▶ Accounting ▶ Services screen)

If your system date is on or after the 1<sup>st</sup> October 2010 and an invoice is backdated to a date before 1<sup>st</sup> October 2010, the invoice will be generated with all service fees including a GST portion of 12.5%. (Service Fee value in the Setup ▶ Accounting ▶ Services screen)

## Invoice, Receipt and Statement Printing

The invoice/receipt format has been changed and the documents will now be printed with a GST amount.

Invoice/receipts covering more than one GST period will be printed with separate GST amounts for each GST period.

### Example 1 – Invoice/Receipt printing covering multiple GST periods

Date	Ref	Description	Amount (GST Incl)
01 Aug 1993	490	Consultation <i>Dr B Beta</i>	40.00
28 Jan 1998	64	Professional Services Miss Helen Eastman <i>Dr B Beta</i>	6.50
28 Jan 1998	20	Thankyou for your payment	6.50 Cr
19 Feb 1998	111	Professional Services Miss Helen Eastman <i>Dr Sam Entwistle</i>	10.00
19 Feb 1998	40	Thankyou for your payment	10.00 Cr
06 Mar 1998	147	Professional Services Mrs Jenny Eastman <i>Dr Sam Entwistle</i>	40.00
24 Mar 1998	186	Immunisation Miss Theresa Eastman <i>Dr Sam Entwistle</i>	0.00
04 Apr 1998	203	Consultation Miss Wendy Eastman <i>Dr B Beta</i>	0.00
30 Apr 1998	246	Immunisation Miss Theresa Eastman <i>Dr Sam Entwistle</i>	0.00
16 Jul 1998	171	Thankyou for your payment	20.00 Cr
07 Aug 1998	403	Consultation Miss Helen Eastman <i>Dr Sam Entwistle</i>	15.00
21 Sep 1998	452	Consultation Miss Helen Eastman <i>Dr Sam Entwistle</i>	0.00
01 Sep 2009	491	Administration Fee <i>Dr B Beta</i>	45.00
20 Sep 2010	492	new <i>Dr B Beta</i>	91.00
01 Oct 2010	494	Consultation <i>Dr B Beta</i>	40.89
GST (01 Jul 1989 - 30 Sep 2010) 27.50			<b>Total 288.39</b>
GST (01 Oct 2010 onwards) 5.33			
<i>(Balance on account \$375.89)</i>			

Remember that the Surgery is open over Easter this year.

## Example 2 - Invoice/Receipt printing covering a single GST period

**Millstone Family Practice, General Practitioners**  
Dr Simon Eaves, Dr Joan Baker, Dr P Chapman, Dr Barry Beta

277 White Horse Road, Millstone, AUCKLAND  
Telephone: (09) 3580 116 Facsimile: (09) 3580 434

**Tax Invoice/Receipt**  
GST No: 98 098 887


**To: Mr Neville Eastman**  
**15 James Crescent**  
**TE PUKE**

**Chart No: 3011**

**06 Oct 2010**

Date	Ref	Description	Amount (GST Incl)
06 Oct 2010	495	Consultation Dr B Beta	45.00
		GST 5.87	
		<b>Total</b>	<b>45.00</b>

(Balance on account \$420.89)



## Example 3 – Statement Printing

Statements will not show the GST amount. They will simply display all activity for a specified period and a total outstanding amount.

**Millstone Family Practice, General Practitioners**  
Dr Simon Eaves, Dr Joan Baker, Dr P Chapman, Dr Barry Beta

277 White Horse Road, Millstone, AUCKLAND  
Telephone: (09) 3580 116 Facsimile: (09) 3580 434

**Statement**  
GST No: 98 098 887

**To: Mr Neville Eastman**  
**15 James Crescent**  
**TE PUKE**

**Chart No: 3011**

**01 Oct 2010**

Date	Ref	Description	Amount (GST Incl)
01 Aug 1981	488	Referral Consult Dr B Beta	84.00
20 Sep 1989	493	Consultation Dr B Beta	40.00
01 Aug 1993	490	Consultation Dr B Beta	40.00
28 Jan 1998	64	Professional Services Miss Helen Eastman Dr B Beta	6.50
28 Jan 1998	20	Thankyou for your payment	6.50 Cr
19 Feb 1998	111	Professional Services Miss Helen Eastman Dr Sam Entwistle	10.00
19 Feb 1998	40	Thankyou for your payment	10.00 Cr
06 Mar 1998	147	Professional Services Mrs Jenny Eastman Dr Sam Entwistle	40.00
16 Jul 1998	171	Thankyou for your payment	20.00 Cr
07 Aug 1998	403	Consultation Miss Helen Eastman Dr Sam Entwistle	15.00
01 Sep 2009	491	Administration Fee Dr B Beta	45.00
20 Sep 2010	492	new Dr B Beta	91.00
01 Oct 2010	494	Consultation Dr B Beta	40.89
		<b>Total</b>	<b>375.89</b>

---

## Module ▶ Claims ▶ Finalise

**Configuration Requirement - Important Note:** It is important that your practice finalises ALL outstanding claims at the close of business on the 30<sup>th</sup> September 2010.

This is to ensure that all claims created and sent after the 1<sup>st</sup> October 2010 contains only items invoiced at 15%.

## Medication Alternatives

Medtech Version 19.2 provides an alternative implementation for prescribing which will help reduce the steps and time taken to search and substitute any discontinued or historical medication.

A new utility (Medication Alternatives) has been added to Medtech32 to enable providers to search for and map old medications to relevant current medications with the aim to assist providers when repeating the old medication for the patient, by presenting them with a list of mapped alternatives for selection and prescribing.

This functionality has been implemented in such a way that you will still be able to repeat an old medication without the old medication prompt if necessary and selectively update the prescribing records for the patient where time permits.

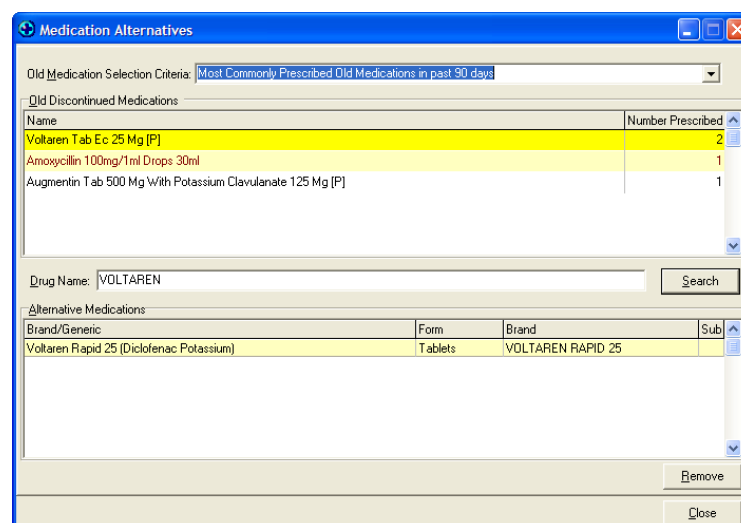
**Configuration Requirement - Important Note:** The Medication Alternative Utility will require some time by a provider in the practice to review the Old Medication list and map alternatives. Whilst this can also be done also at the time of prescribing, it is more effective and efficient to do this before hand and have a number of alternatives available to the user when prescribing.

### Mapping Old Medications in the Medication Alternatives Utility

The Medication Alternative Utility requires some time by a provider in the practice to review the Old Medication list and map alternatives. Medication Alternatives can be added 'on the fly' at the time of prescribing an Old Medication however it would be more efficient when prescribing to have a number of alternatives to an old medication already mapped for selection.

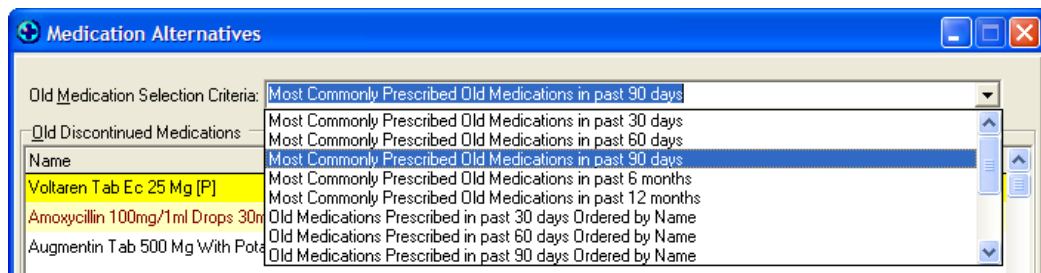
To proceed with the mapping of medication alternatives:

1. Navigate to **Setup ▶ Clinical ▶ Medication Alternatives**



2. At the top of the screen you will find the **Old Medication Selection Criteria** field. This provides various filters for you apply to your prescription data to generate the relevant list of old medications for mapping.

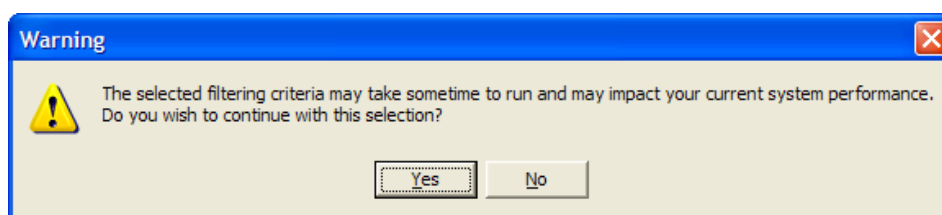
By default the selected criteria is 'Most Commonly Prescribed Old Medications in last 90 days'. This will generate a list of old medications that have been prescribed in the last 90 days, and will be displayed in descending order with the most frequently prescribed old medication at the top of the screen. The number prescribed column will identify for you how many prescriptions for the particular medication have been created.



Other criteria selections include:

- a. Most Commonly Prescribed Old Medications in past 30 days
- b. Most Commonly Prescribed Old Medications in past 60 days
- c. Most Commonly Prescribed Old Medications in past 90 days
- d. Most Commonly Prescribed Old Medications in past 6 months
- e. Most Commonly Prescribed Old Medications in past 12 months
- f. Old Medications Prescribed in last 30 days Ordered by Name
- g. Old Medications Prescribed in last 60 days Ordered by Name
- h. Old Medications Prescribed in last 90 days Ordered by Name
- i. Old Medications Prescribed in last 6 months Ordered by Name
- j. Old Medications Prescribed in last 12 months Ordered by Name
- k. All Old Prescribed Medications Ordered by Number Prescribed
- l. All Old Prescribed Medications Ordered by Name
- m. All Old Prescribed Medications Ordered by Brand Name
- n. All Old Prescribed Medications Ordered by Generic Name

Clicking on some of the criteria selections will present the following message:



Click on Yes to continue, or No to cancel the change in the selection criteria.

3. Once you have selected the relevant criteria in the Medication Alternatives screen, the Old Discontinued Medications list will be displayed

Old Discontinued Medications	
Name	Number Prescribed
Augmentin Tab 500 Mg With Potassium Clavulanate 125 Mg [P]	8
Voltaren Sr Tab Long-Acting 75 Mg [P]	4
Prempak-C ** 0.625Mg Tab (40)	4
Gaviscon ** 500Mg/10Ml Liq	2
Amoxicillin 100mg/1ml Drops 30ml	1
Selectol Tab 200 Mg [P]	1
Erythromycin Ethyl Succinate Grans For Oral Liq 200 Mg Per 5 Ml [P]	1

- When clicking on one of the medications listed in the screen, the Alternatives that have been mapped for the old medication will be displayed below in the Alternative Medications area and the name of the Drug will appear in the Drug Name field.

Medication Alternatives

Old Medication Selection Criteria: Most Commonly Prescribed Old Medications in past 90 days

Old Discontinued Medications	
Name	Number Prescribed
Augmentin Tab 500 Mg With Potassium Clavulanate 125 Mg [P]	8
Voltaren Sr Tab Long-Acting 75 Mg [P]	4
Prempak-C ** 0.625Mg Tab (40)	4
Gaviscon ** 500Mg/10Ml Liq	2
Amoxicillin 100mg/1ml Drops 30ml	1
Selectol Tab 200 Mg [P]	1
Erythromycin Ethyl Succinate Grans For Oral Liq 200 Mg Per 5 Ml [P]	1

Drug Name: AUGMENTIN

Alternative Medications			
Brand/Generic	Form	Brand	Sub
Augmentin 500 (Amoxicillin,Clavulanic Acid)	Tablets	AUGMENTIN 500	
Paracetamol (Paracare)	Suppositories	PARACARE	

- To add an alternative click on the selected medication in the Old Discontinued Medications section, and then click on the Search button.
- This will then open up the standard Drug Search screen already filtered for the Drug Name selected.

**Drug Search**

Quick | Advanced

Drug Name:  Search

Therapeutic Options:

Personal  Brand/Generic

SA Drugs:  Sub:  Exclude Unsafe in Pregnancy:  Exclude Banned in Sport:  Include Inactive:

Brand/Generic	Form	Brand	Sub
Augmentin 500 (Amoxicillin,Clavulanic Acid)	Tablets	AUGMENTIN 500	
Augmentin Forte Syrup 250 (Amoxicillin,Clavulanic Acid)	Suspension	AUGMENTIN FORTE SYRUP 250	
Augmentin Intravenous 1.2 G (Amoxicillin,Clavulanic Acid)	Injection	AUGMENTIN INTRAVENOUS 1.2 G	
Augmentin Intravenous 600 Mg (Amoxicillin,Clavulanic Acid)	Injection	AUGMENTIN INTRAVENOUS 600 ...	
Augmentin Syrup 125 (Amoxicillin,Clavulanic Acid)	Suspension	AUGMENTIN SYRUP 125	

Strength	Price	PML
Tab	0.00	

OK Generic Add... MIMS Cancel Help

- Click on the medication you would like to map as an Alternative and click on the OK button.
- The selected Alternative for the Old Medication will be added to the Alternative Medications list at the bottom of the Medication Alternatives screen.

Alternative Medications

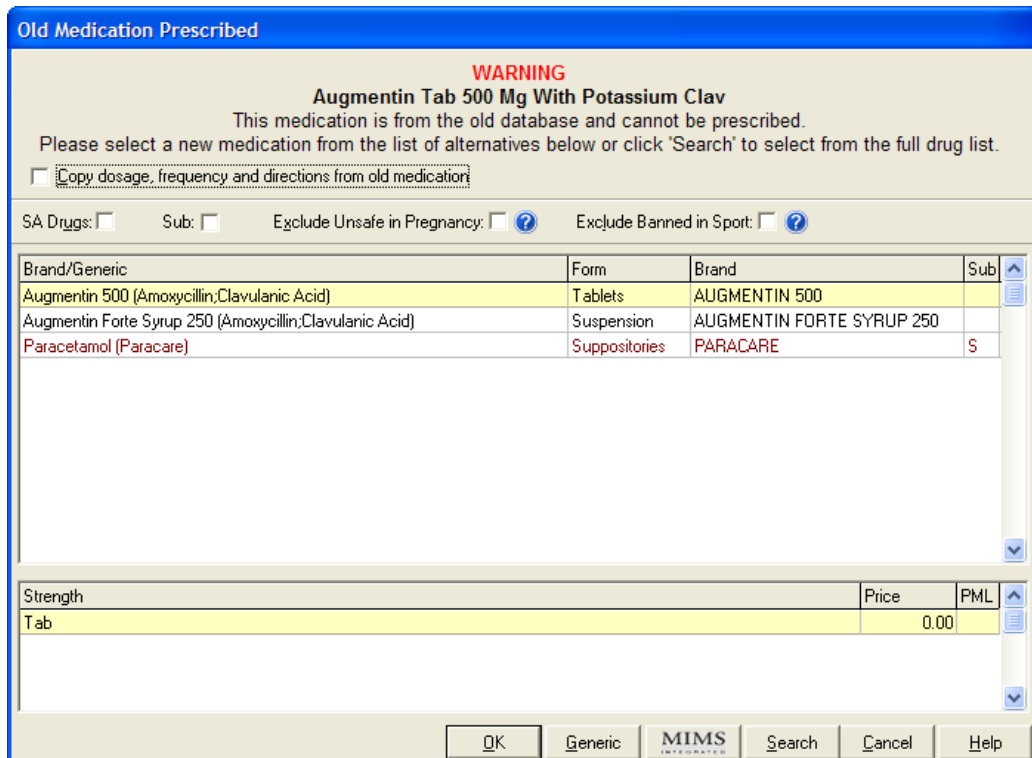
Brand/Generic	Form	Brand	Sub
Augmentin 500 (Amoxicillin,Clavulanic Acid)	Tablets	AUGMENTIN 500	
Augmentin Forte Syrup 250 (Amoxicillin,Clavulanic Acid)	Suspension	AUGMENTIN FORTE SYRUP 250	
Paracetamol (Paracare)	Suppositories	PARACARE	

- You can continue this process for as many of the Old Medications listed, and can add a single or multiple alternatives to any old medication selected.
- If you need to remove any of the mapped Alternative Medications for an Old Medication, you can highlight the relevant entry in the Alternative Medications list, and then click on the Remove button. This will remove the mapping.
- Click on the Close button to close the Medication Alternatives screen.

## Prescribing an Old Medication (using the Medication Alternatives Utility)

### Prescribing where a mapped Medication Alternative exists

1. Select all of the medications to be repeated as per normal process.
2. When completing the repeat of the medications, if any of them are old medications the following screen will appear for the user.



**Old Medication Prescribed**

**WARNING**  
**Augmentin Tab 500 Mg With Potassium Clav**  
 This medication is from the old database and cannot be prescribed.  
 Please select a new medication from the list of alternatives below or click 'Search' to select from the full drug list.

Copy dosage, frequency and directions from old medication

SA Drugs:  Sub:  Exclude Unsafe in Pregnancy:  Exclude Banned in Sport:

Brand/Generic	Form	Brand	Sub
Augmentin 500 (Amoxicillin;Clavulanic Acid)	Tablets	AUGMENTIN 500	
Augmentin Forte Syrup 250 (Amoxicillin;Clavulanic Acid)	Suspension	AUGMENTIN FORTE SYRUP 250	
Paracetamol (Paracare)	Suppositories	PARACARE	S

Strength	Price	PML
Tab	0.00	

OK Generic MIMS Search Cancel Help

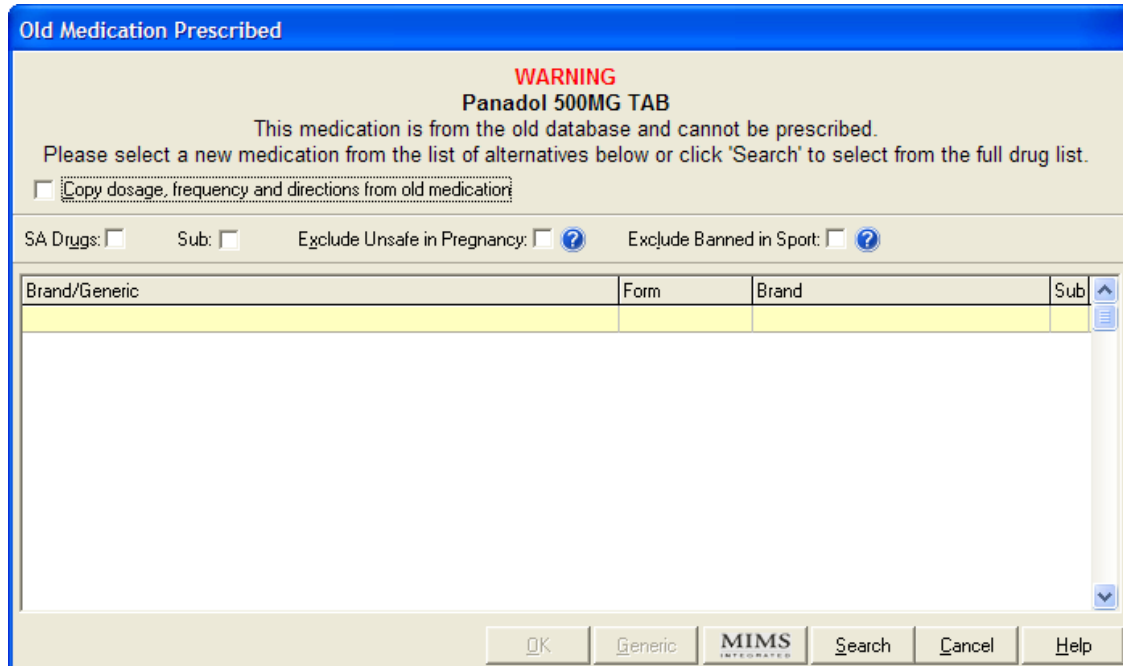
3. The Old Medication Prescribed screen will be displayed identifying the name of the Old Medication that you are attempting to re-prescribe for the patient, along with a list of any of the Alternative Medications that have been mapped to the selected medication.

The functionality in this screen is the same as the standard Drug Search screen.

4. You can choose to copy the dosage, frequency and directions of the Old medication into the new prescription by selecting the 'Copy dosage, frequency and directions from old medication' checkbox.
5. Select the required alternative for the medication and click on OK to prescribe. The new prescription screen will be displayed to enable you to complete the medication.

## Prescribing where a mapped Medication Alternative does not exist

1. Select all of the medications to be repeated as per normal process.
2. When completing the repeat of the medications, if any of them are old medications the following screen will appear for the user.



**Old Medication Prescribed**

**WARNING**  
**Panadol 500MG TAB**  
 This medication is from the old database and cannot be prescribed.  
 Please select a new medication from the list of alternatives below or click 'Search' to select from the full drug list.

Copy dosage, frequency and directions from old medication

SA Drugs:  Sub:  Exclude Unsafe in Pregnancy:  ? Exclude Banned in Sport:  ?

Brand/Generic	Form	Brand	Sub

OK Generic MIMS INTEGRATED Search Cancel Help

3. The Old Medication Prescribed screen will be displayed identifying the name of the Old Medication that you are attempting to re-prescribe for the patient, along with a list of any of the Alternative Medications that have been mapped to the selected medication, in this case this section of the screen is blank as there are no mapped alternatives.

The functionality in this screen is the same as the standard Drug Search screen.

4. You can choose to copy the dosage, frequency and directions of the Old medication into the new prescription by selecting the 'Copy dosage, frequency and directions from old medication' checkbox.
5. Select the Search button to open the standard Drug Search screen to enable you to search for and select a relevant medication to re-prescribe as an alternative to the Old Medication.

On the Drug Search screen in this scenario, at the time of selecting the medication you are able to add 'on the fly' the selected medication to the Alternative Medications list for the old medication so that next time you re-prescribe the same old medication, the alternative will be available.

To do this click on the 'Add to Alternatives List' at the bottom of the Drug Search screen after selecting your medication.



(or)

You can click on the Cancel button at this point where there is no Alternative Medication mapping available, and if you have the repeat old medication bypass active, you can repeat the old medication using this process.

## Other Prescribing Changes

### General SQL Error when Prescribing

In certain circumstances providers have been receiving a General SQL Arithmetic Truncation error when prescribing specific medications for specific patients.

This issue has been resolved.

In some circumstances providers were finding that the patients Long Term Medication list was being removed from the screen on receiving the General SQL Arithmetic Truncation error.

This issue has been resolved.

### Data Set Not in Edit Mode Error when Prescribing

In certain circumstances providers have been receiving a Data Set Not In Edit Mode error when selecting Long Term medications to be re-prescribed for a patient.

This issue has been resolved.

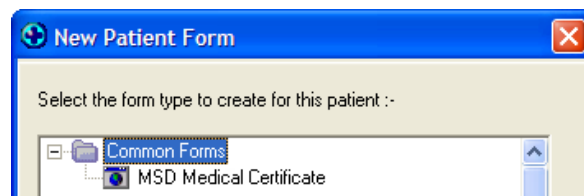
## MSD - Work Capacity Medical Certificate

Work and Income have made changes to the medical certificate used when determining medical eligibility for the Sickness Benefit, Invalid's Benefit, and Independent Youth Benefit (Sickness).

These changes have been made in consultation with general practitioners, client advocates and frontline Work and Income staff.

In this release you will have an updated electronic Medical Certificate (MC31.3) form for the Ministry of Social Development (MSD) that will allow the user, primarily a health professional (GP), to fill in a Medical Certificate online and print a PDF for submission.

The Work Capacity Medical Certificate (MC31.3) form can be accessed via menu navigation: **Module ▶ Advance Forms ▶ New Form ▶ MSD Medical Certificate**



The following improvements have been made to enhance the information Work and Income receives about the impact of a person's condition(s) on their capacity for work, and to make the form easier for practitioners to complete.

- The focus and language used have shifted from 'condition/diagnosis' to 'capacity/incapacity'. This shifts the focus to what a person can do, not what they can't.
- The questions have been reworded to be clearer and more concise. This makes the form more transparent and easier to complete.
- The order of questions has been changed to improve the flow of information. The practitioners consulted with indicated that this flow was more connected to how they thought through the process when meeting with a patient.
- The sections for indicating a 'provisional diagnosis' and capacity for 'light/selected duties' have been removed.
- The table in question 18 (question 13 in the old certificate) has been updated to capture information on capacity for training and part-time work in more detail. This information will be used to determine entitlement and obligations, and inform engagement and planning for work.
- The longest duration in the table is now 'unlikely in less than one year'. This is less ambiguous than the previous wording of 'unlikely in the foreseeable future'.
- Practitioners are now specifically asked to indicate the impact of the person's condition(s) on the type of work they can undertake.
- Guidance notes have been provided on the side of the medical certificate to assist practitioners when completing the form.

The term 'open employment' had been defined on the certificate.

The updated electronic Work Capacity Medical Certificate will be printed in the following format:

Patient Name: SMITH, ARNOLD      HPI facility number:      Unique form ID: 0

## WORK CAPACITY MEDICAL CERTIFICATE

Patient Name: SMITH, ARNOLD      HPI facility number:      Unique form ID: 0

### Personal Details

Client number  
 First name(s)      ARNOLD  
 Surname or family name      SMITH  
 Residential Address      76 Alexander Street, Newmarket, Auckland  
 Date of Birth      01-02-1934      Gender      M  
 Are you the person's usual practitioner?      Yes  
 Who do you consider best placed to provide this information?      Yourself

### Hospitalisation

Is the person in hospital?      Yes  
 Hospital name      Teit Hospital  
 Date of admission      15-09-2010  
 Expected length of stay?      5 Days

### Sickness, Injury or Disability

What are the main clinical conditions affecting the person's ability to work?

READ Code	Description	ACC	Primary Diagnosis
E202	Phobic disorders	Yes	Yes
R0730	[D]Flatulence	No	No
I133	Asthma	Yes	No

Is the person blind? No  
 If covered by ACC, What is the ACC Number? T667726  
 How do the conditions listed previously impact on the person's capacity for work and the type of work they can undertake? Very much so!

### Impact on capacity for work

Do the conditions listed previously limit the person's capacity to work for 30 hours or more per week?      Yes  
 Do the conditions listed previously limit the person's capacity to work regularly in open employment for 15 hours or more a week?      Yes  
 Is the person's incapacity for work expected to last at least 2 years?      No  
 Is the person's life expectancy less than 2 years?      No  
 Is the person receive active treatment or under the care of a specialist for any of the conditions listed previously?      No  
 When is the person likely to be capable of:  
 Work planning      Now  
 Limited training (less than 15 hours per week)      Less than 3 Months  
 Training (at least 15 hours per week)      3 - 6 Months  
 Limited part-time work (less than 15 hours per week)      3 - 6 Months  
 Part-time work (at least 15 hours per week)      Now  
 Full-time work (30 hours or more per week)      Now  
 Are there any other treatments or interventions that could assist the person into work?      Yes  
 Details      Testing      17-09-2010  
 Unable to work from      14-09-2011  
 When should the person's capacity for work next be assessed?      14-09-2011

### Comments

Would you like Work and Income to contact you about this person's condition or ability to work? Yes  
 Please provide any comments that would assist Work and Income to determine entitlement to benefit and/or assist the person into work.  
 Some comments go here.

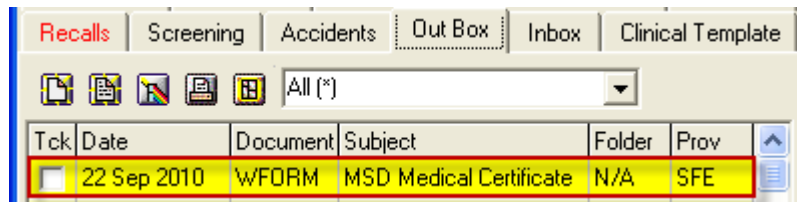
### Health Practitioner Identity

I have discussed the information contained in this form with the person (their guardian or legal representative) and they have agreed with the information being provided to Work and Income.

HPI number	Joe Bloggs	Agreement Confirmation	Yes
HPI facility number		Profession	Doctor
Full name	Dr Sam Eatwistle		
Practice name			
Practice address	17 York Street, Parnell		
Telephone number	093580116		
Date person examined	15-09-2010		
Date Certified completed	15-09-2010		

Health practitioner signature

An electronic copy of the completed Work Capacity Medical Certificate will be available in the Patient Outbox.



## Clinical Event Export Utility (Smoking Indicators)

The Clinical Event Export Utility has been updated to enable export of Smoking indicators to your PHO.

The changes to the Clinical Event Export Utility provide an enhanced mapping tool which will default to the codes that were implemented in an earlier Medtech32 update for Smoking Cessation.

Mapping options are also available for practices and PHO's who wish to use their own user defined codes that are not mapped to the Medtech32 codes.

**Configuration Requirement - Important Note:** The Clinical Event Export Utility will require some configuration by a Practice staff member to map the Smoking Status screening terms and associated Read Codes. This must be completed before running the Clinical Event Export Utility.

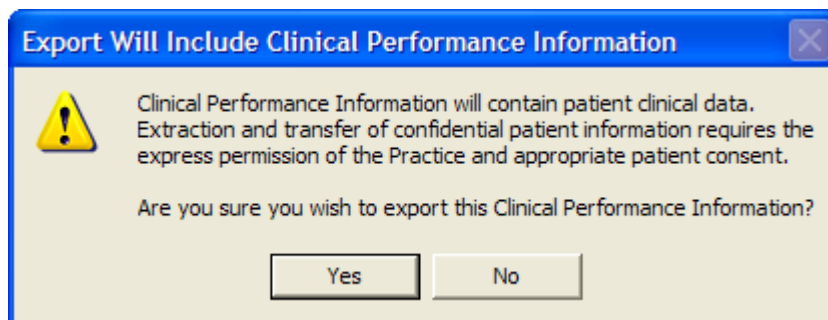
### Updating the Clinical Event Export Utility Mapping

The Clinical Event Export Utility requires configuration to ensure that all Smoking Status, Brief Advise and Cessation screening terms and read codes are mapped based on the way the data is captured in your practice.

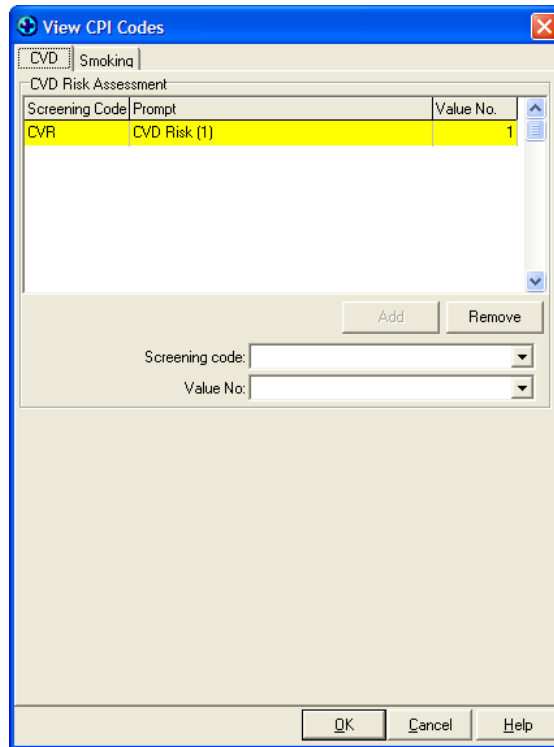
This is to ensure that the data for these areas is able to be exported to the PHO tools in the correct format.

#### Opening the Clinical Event Export Utility Mapping Screen

1. To open the utility mapping screen navigate to: Utilities ▶ LinkTech ▶ PHO Clinical Event, the PHO Clinical Event Export Utility screen will be displayed.
2. Click on the 'Export Clinical Performance Information' option, the following message will be displayed.

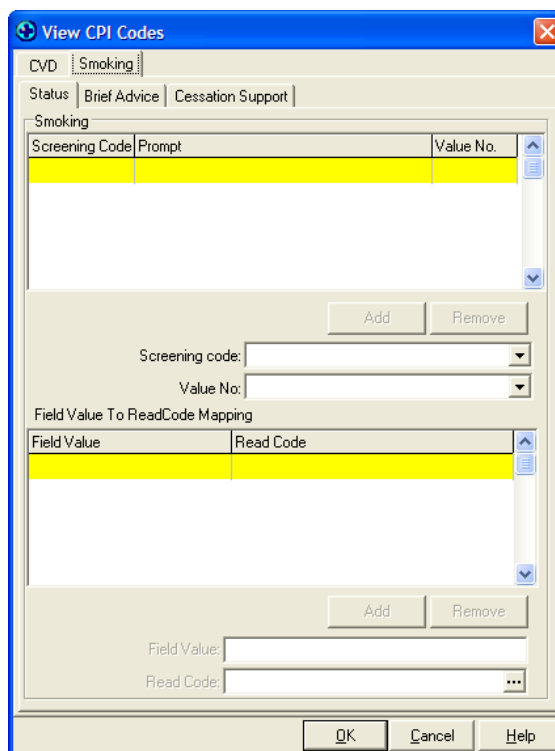


3. Click on Yes to continue.
4. Click on the 'Modify CPI Screening Codes' button, the View CPI Codes screen will be displayed.



### Mapping the Smoking Indicator Values

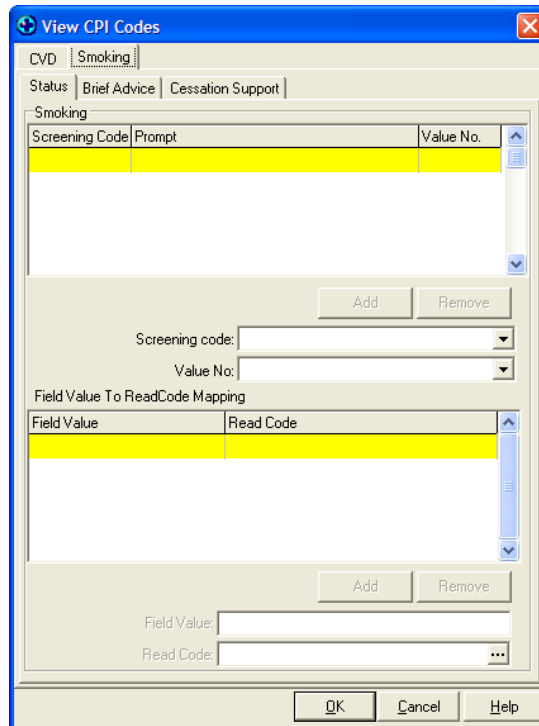
1. Click on the Smoking tab at the top of the screen, the Smoking Indicator mapping screens will be displayed.



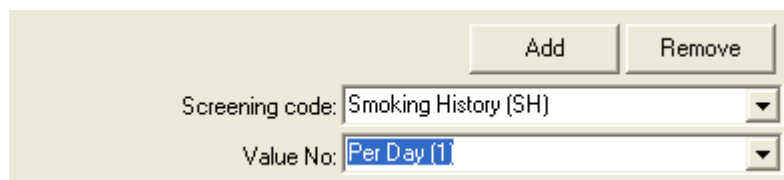
2. There are three sections of the mapping screen that must be reviewed and updated as required.
  - a. Status
  - b. Brief Advice
  - c. Cessation Support

### Mapping Smoking Status

1. Click on the Status tab, the following screen will be displayed.



2. The practice must select and configure in this screen the Screening Term used for capturing the Smoking Status indicators.
  - a. Select the relevant Screening Code from the drop down list
  - b. Select the Value No associated with the specific field in the Screening Term that is used to capture the Smoking Status indicator



- c. Click on the Add button to add the Screening Code to the configuration.

Screening Code	Prompt	Value No.
SH	Per Day (1)	1

3. You must now map the selected Screening Code and Value to the relevant Read Code
  - a. Highlight the Screening Term and Value entry in the configuration.
  - b. In the Read Code Mapping section, select the relevant Field Value that requires mapping from the drop down list.
  - c. Use the Read Code search to identify the relevant Read Code associated with the Field Value.

**Important Note:** If your Screening Code Setup has the Choices already pre-mapped to Read Codes, the relevant Read Code will automatically be selected for you based on your Field Value selection.

Add	Remove
Field Value:	Yes
Read Code:	Smoking started (137Q.00)

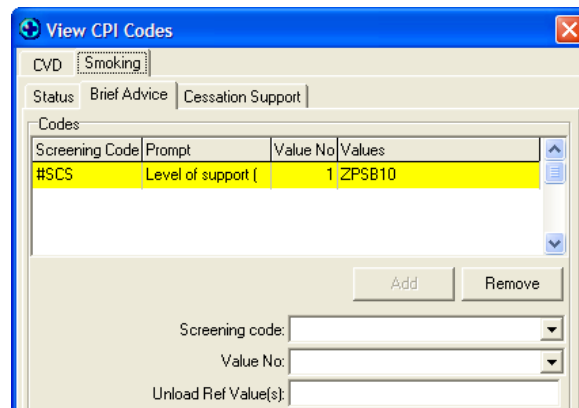
- d. Click on the Add button to add the Read Code Mapping configuration.

Field Value	Read Code
Yes	Smoking started (137Q.00)

**Important Note:** This must be done for each Screening Code configured for Smoking Status.

## Mapping Brief Advise

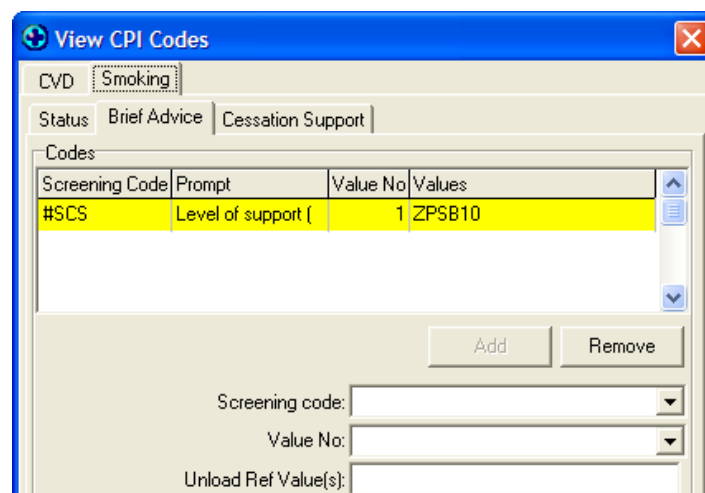
1. Click on the Brief Advise tab, the following screen will be displayed.



2. The Brief Advise screen will already be pre-mapped for the practice based on the Smoking Cessation Screening Code that was added to Medtech32.
3. It is recommended that the user check this configuration to ensure all values are displayed.
4. Alternative Screening Terms can be mapped into the utility if the practice uses an alternative term for capturing the Brief Advise indicators.
  - a. Select the relevant Screening Code from the drop down list
  - b. Select the Value No associated with the specific field in the Screening Term that is used to capture the Brief Advise indicator
  - c. The Unload Ref relevant to the Value selected needs to be entered into the Unload Ref Value field. The unload ref should match the required DHBNZ specified values.
  - d. Click on the Add button to add the Screening Code configuration.

## Mapping Cessation Support

1. Click on the Cessation Support tab, the following screen will be displayed.



- 
2. The Cessation Support screen will already be pre-mapped for the practice based on the Smoking Cessation Screening Code that was added to Medtech32.
  3. It is recommended that the user check this configuration to ensure all values are displayed.
  4. Alternative Screening Terms can be mapped into the utility if the practice uses an alternative term for capturing the Cessation Support indicators.
    - a. Select the relevant Screening Code from the drop down list
    - b. Select the Value No associated with the specific field in the Screening Term that is used to capture the Brief Advise indicator
    - c. The Unload Ref relevant to the Value selected needs to be entered into the Unload Ref Value field. The unload ref should match the required DHBNZ specified values.
    - d. Click on the Add button to add the Screening Code configuration.
  5. Click on OK to save changes to the Smoking Indicator configurations.

## **ADHB and General Referral Forms**

An issue was identified with the ADHB and General Referral Web Forms where when attaching Diagnostic Reports and Scanned Documents to a patient referral, on clicking the MORE button, the list of available reports/documents was not being updated.

This issue has been resolved, and now when clicking on the MORE button for both Diagnostic Reports and Scanned Document sections of the Referral all records for the patient will be displayed.

## **ACC Provider Treatment Triggers**

There is a change to the Physiotherapy Provider Treatment Trigger numbers.

The changes have been made to the Treatment Triggers for Physiotherapy providers based on the Read Code set provided by ACC at the end of August 2010.

## **Advanced Forms Expiry Date Renewal**

The Advanced Forms Expiry Date in the Medtech32 Registration screen has been renewed to 30 September 2011.

## Previous 19.1 Update Items

### Repeating of Old Medications

Over the years there have been repeated requests from GP's, Pharmacists and the wider health sector, to phase out the prescribing of discontinued (historical) medications.

These medications are defined as a MIMS drug which is now out of date, a historical Pharmaco medication prior to MIMS, a medication converted from another PMS during data migration, a Medtech16 medication or any user entered medication that is now inactive.

In order to phase out these medications we implemented a "Warning Message" in version 19 that alerts users each time they prescribed such medications and prompted the prescriber to search and substitute with a current medication.

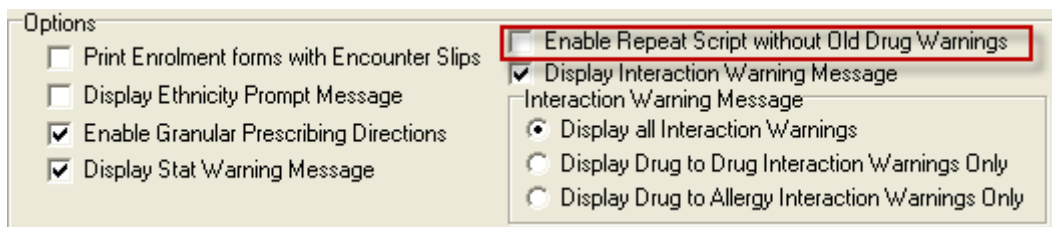
A number of practices have informed us that the steps required to be taken each time when repeating a discontinued medication is having an undesirable impact in terms of the time it takes to do this repeatedly for each patient in the practice.

Medtech Version 19.1 provided the ability to disable (if you chose to) the current warning message that comes up when you repeat a discontinued medication in version 19. The details below provides information on using this function.

#### To disable the 'Old Medication' warning message:

1. Navigate to Setup ▶ Staff ▶ Members
2. Click on the Provider Messages tab
3. In the Options section at the bottom of the screen you will find the 'Enable Repeat Script without Old Drug Warnings' option.

**Note:** This option will be turned 'off' by default, and on installation of Version 19.1 the repeating process will remain as per Version 19.0 functionality until users make the decision to disable the warning message.



4. To disable the repeat old medication warning message place a tick in the 'Enable Repeat Script without Old Drug Warnings' option.
5. Click on OK to save the changes.
6. You will need to exit and re-enter Medtech for the changes to take effect.

## Repeating process with Old Medication Warning disabled:

Once the provider has elected to disable the Old Medication Warning by selecting the option above on the Patient Medication screen a new option will be available for repeating medications.

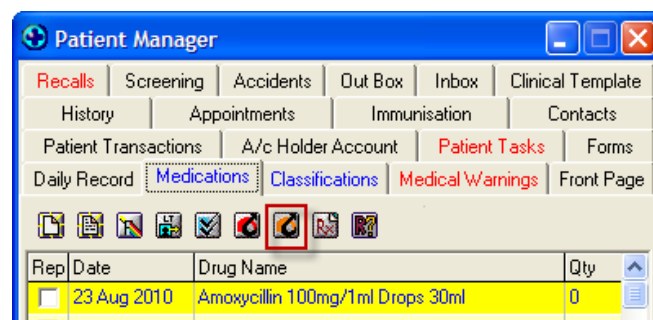
**Important Note:** If you have chosen to turn disable the Old Medication Warning message when repeating, you can continue to use the standard repeating icon and options if you would progressively like to update a patients old medications where time permits.

The standard repeating icon and options should also be used where you are not repeating an old medication.

Repeating old medications without having the Old Medication warning prompted can be completed in one of the following ways:

### 1. Repeat Old Medication Icon

- a. Select all of the medications to be repeated by placing a tick in the Rep check box next to the medication.
- b. Click on the new 'Repeat selected medications – without old medications check' icon



- c. This will follow pre Version 19.0 process and repeat all medications without the prompts for replacing old medications.

## 2. Repeat Old Medication Right Click

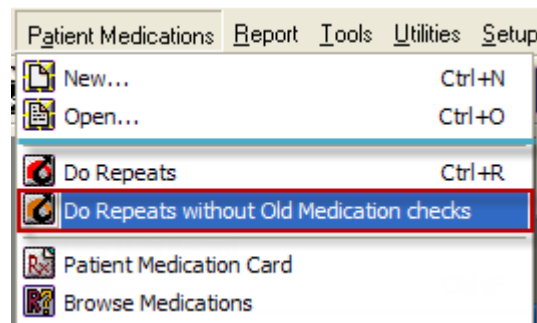
- a. Select all of the medications to be repeated by placing a tick in the Rep check box next to the medication.
- b. Right Click on the selected medication and select the 'Repeat Highlighted Medication without checks' option.

Rep	Date	Drug Name	Qty
<input type="checkbox"/>	26 Nov 2009	Amo Endosol Eye Irrigation	12
<input type="checkbox"/>	11 Jun 2009	Enalapril Maleate 5mg Tab	30
<input type="checkbox"/>	<i>26 Nov 2008</i>	<i>Augmentin Tab 500 Mg With Potassium Clay</i>	<i>30</i>
<input type="checkbox"/>	2	Print To...	30
<input type="checkbox"/>	2	Repeat Highlighted Medication	30
<input type="checkbox"/>	1	Repeat Highlighted Medication without checks	9
<input type="checkbox"/>	1	Long Term/Not Long Term	12
<input type="checkbox"/>	2	Default Filter	Clay 30
		This Medication Only	

- c. This will follow pre Version 19.0 process and repeat the medication without the prompt for replacing old medications.

## 3. Repeat Old Medication Menu Item

- a. Select all of the medications to be repeated by placing a tick in the Rep check box next to the medication
- b. From the 'Patient Medications' menu item select the 'Do Repeats without Old Medication checks' option.



- c. This will follow pre Version 19.0 process and repeat the medication without the prompt for replacing old medications.

**Please Note: Old medications can be identified as they are displayed in italics in the Patient Medication list.**

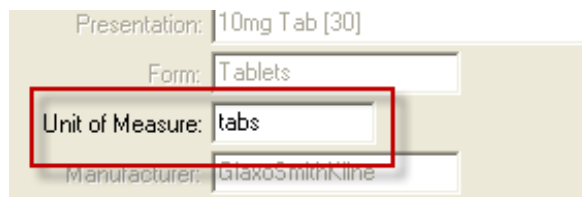
## Units of Measurement

With the release of Version 19.0 the Setup ▶ Clinical ▶ Drug screen was disabled to ensure that users could not edit MIMS drug formulary information that could cause inconsistencies with prescribing and interaction warnings.

As part of this Medtech disabled the ability for prescribers to alter the Unit of Measurement which has lead to some incorrect data being presented to the user.

Medtech and UBM Medica (MIMS) are working together to define and agree on the required changes needed to correctly display the unit of measure for medicines that are, say, dispensed in sachets as grams, eye drops as millilitres etc.

To provide users with the ability to alter this value in the mean time, the editing of the Unit of Measurement field has been re-enabled as part of this update so that users can update as they could prior to Version 19.0.



Presentation: 10mg Tab [30]  
 Form: Tablets  
**Unit of Measure: tabs**  
 Manufacturer: GalaxosmithKline

## Konnnect SureMed Insurance Form

On installation of the Medtech32 Version 19.0 upgrade consultation dates entered into the application before upgrade were not pre-populating onto the SureMed insurance form. This update will resolve the issue.

## ManageMyHealth

### ManageMyHealth Inbox Upload

Patient Inbox records will no longer be uploaded to ManageMyHealth until the Provider has filed the result.

### ManageMyHealth Online Appointments Manager

The appointment notes for an appointment request received from ManageMyHealth will now appear in the Notes field in Medtech Appointment Book when the appointment request has been accepted.

If you have any questions regarding the information contained in these Release Notes please contact:

Medtech Helpdesk on **0800 2 MEDTECH (633 832) - Option 1**