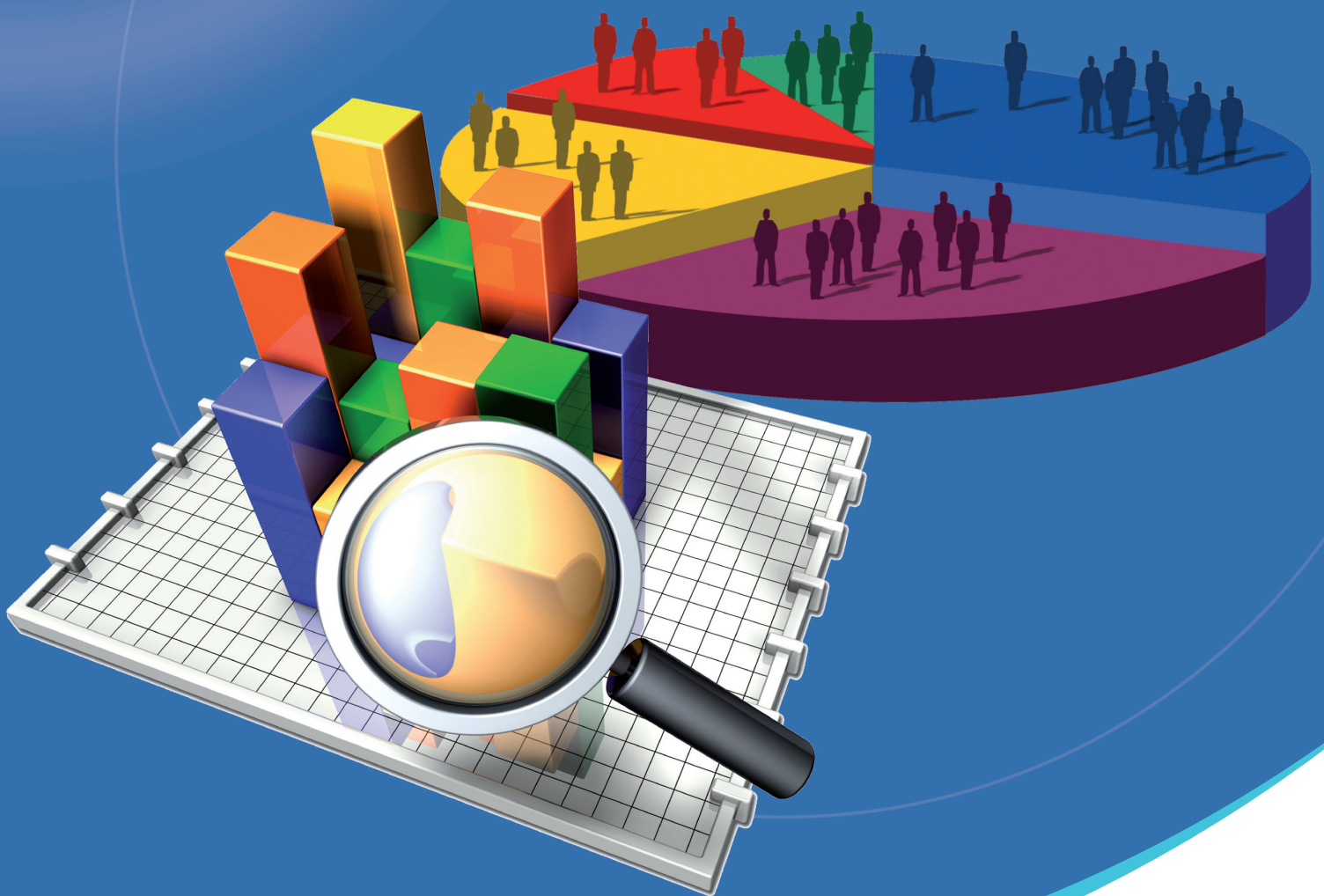


# medtech **Clinical Audit Tool**

Enhancing Clinical Effectiveness



Clinical Audit Tool is a quick and easy way of analysing your patients' data, enabling population health reporting and improved data quality. Fully integrated with your Practice Management System (PMS), Clinical Audit Tool provides fast and effective analysis of the practice database, allowing you to be in complete control of patient information.

### Population Management Tool

Clinical Audit Tool assists practice staff to closely monitor their practice population as a whole. Ability to target specific patient groups with chronic health conditions and cater to individual needs more efficiently.

### Data Quality Improvement Tool

Analyse and evaluate quality of data using powerful features to update patients' data.

### Ease of Use

Clinical Audit tool provides intuitive easy to use functionality. With a few clicks of the mouse, complex reports are available with statistical graphs and charts.

### Real Time Data Capture

Clinical Audit Tool extracts "Real Time Data" from your PMS providing a dynamic view of clinical data allowing comparison between historic and live data.

### Interactive Clinical Information System

Fully interactive with medtech32

- click through to patient clinical information
- recalls and alerts
- bulk mail outs
- code patients records where data is incomplete

## Why Use Clinical Audit Tool?

The data collected through the Clinical Auditing Tool will provide information on:

**Access to prevention services**  
(e.g. the percentage of the population receiving regular health checks).

**Compliance with standard medication protocols**  
(e.g. the number of diabetics on ACE Inhibitor treatment).

**Outcomes of care**  
(e.g. the proportion of diabetics with Hb1Ac greater than or equal to 10%).

## Features

Web Based Clinical Audit Tool Includes:

- 1. Demographics Filter:** Comprehensive demographic data filtering and display of practice population based on ethnicity, gender, age, patient's last visit, provider etc.
- 2. Screening Filter:** Extensive data filtering and display of screening items such as lipids, BMI, HbA1c, BP, cervical smear, smoking etc.
- 3. Medications Filter:** Filtering and display of various commonly used medicines which are used to treat diseases more prevalent in the practice population.
- 4. Disease Filter:** Vast array of disease filters to manage "Chronic Diseases" and "Practice Population Prevalent Diseases".
- 5. Immunisation Filter:** Detailed listing of all vaccines given to the practice population.
- 6. CPI Reporting:** Interactive graphical representation of Clinical Performance Indicators (CPI) for extensive analysis of data.
- 7. Cross Tabulation:** Ability to apply multiple queries by selecting filters in different screens and displaying the results in unified graphical and listed data.
- 8. Advance Filtering:** Provision of an advanced filtering utility to provide further analysis and drilling down of filtered data.
- 9. Action Functionality:** Ability to send individual (or a group of patients), recalls, alerts and mail merged letters on results or data list generated using Clinical Audit Tool.
- 10. Data Export:** Utility to export patient list data into an Excel or Word document for convenient storing process and to send data to other entities.
- 11. APCC Integration:** Integration with current APCC data set standards, allows upload to the APCC website. Practices can view their data and compare with other practices in the trial data set.

