



MedTech Healthcare Pty Ltd
ACN 095 303 781
MedTech House
Level 1, 83 Palmerston Crescent
South Melbourne 3205
Helpdesk 1800 148 165
T 03 9690 8666
F 03 9690 8010
W www.medtechglobal.com

MedTech Client Machine Survey Utility

The MedTech Client Machine Survey Utility allows for information to be collected from a user/client computer.

When run this utility will provide information relating to the specific configuration of a clients computer and will enable for data to be collected to aid troubleshooting for in-depth technical calls.

Information retrieved from the Machine Survey Utility include the following:

- ▶ Bios Information
- ▶ CPU Information
- ▶ Folder Information
- ▶ Logical Drives
- ▶ Memory
- ▶ Metrics
- ▶ Miscellaneous
- ▶ Network Information
- ▶ OS
- ▶ Power Management Settings
- ▶ Screen Settings
- ▶ Environmental Variables
- ▶ System Configuration
- ▶ MedTech MT32.ini File
- ▶ MedTech Installation Information
- ▶ MedTech Registry Settings

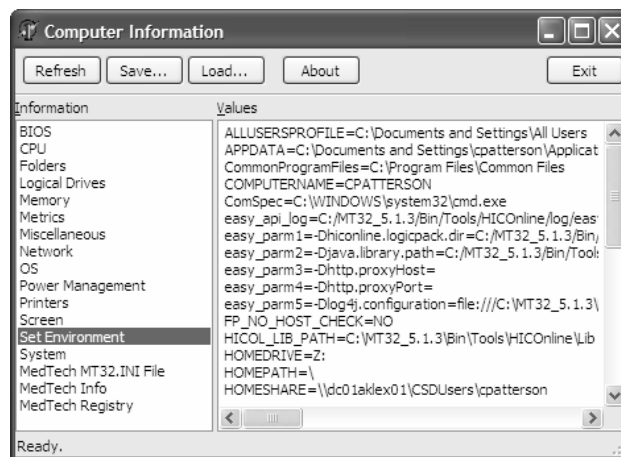
Installing the MedTech Client Machine Survey Utility

1. Visit our website at www.medtechglobal.com. Click the link to the **Australia** website (located at the top of the window) and click on **Downloads, Useful Tools and Documents**.
2. Here you will find the MedTech Client Machine Survey Utility.
3. In the **File Download Security Warning** dialogue box select **Save**.
4. Browse to the location you would like to save the Machine Survey Utility to and click on **OK**.
5. The utility will be saved to the selected location.

Note: It is recommended that you save the utility within your current MT32 folder structure so that it is easy to find when required.

Running Machine Surveys

1. Double Click on the CompInfo.exe file.
2. The Computer Information window will open and the Survey will run automatically.
3. Information will be displayed within the relevant section once survey has completed.



Exporting Data Retrieved from Survey

1. Run the Survey using steps 1 to 3 above.
2. Select Save.
3. Browse to the location where you would like to export the data to.
4. Enter a name for the exported file in the **File Name** field
5. Select the Type of file you would like to generate from the **Save as Type** drop down list.
6. Click on **Save** to save the data.

IMPORTANT NOTE

This utility is provided to MedTech technicians and clients as is. MedTech accepts no liability for damage caused to a database or information gathered by use of this utility. Please contact MedTech Support for more information before running this utility.