

MedTech32

Interbase 6.0 – Backup and Restore Instructions



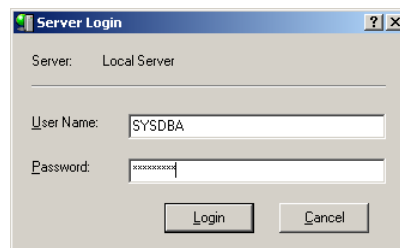
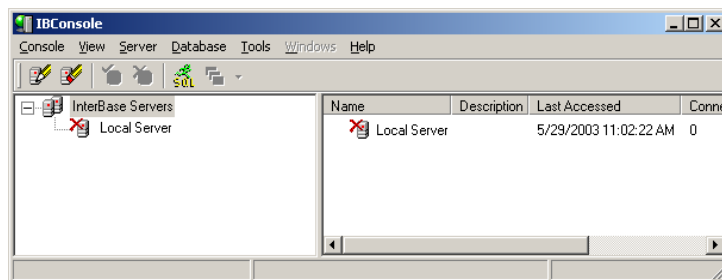
Warning

The following instructions should be done on the MedTech32 server with all computers logged out of MedTech32.

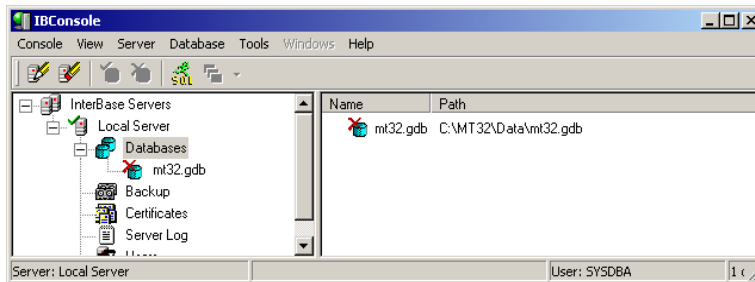
The amount of free space required on the hard drive where MT32 is located should be at least TWICE the size of the database you will work on i.e. MT32.GDB or BLOB.GDB.

Phase 1: Configuring Interbase Console

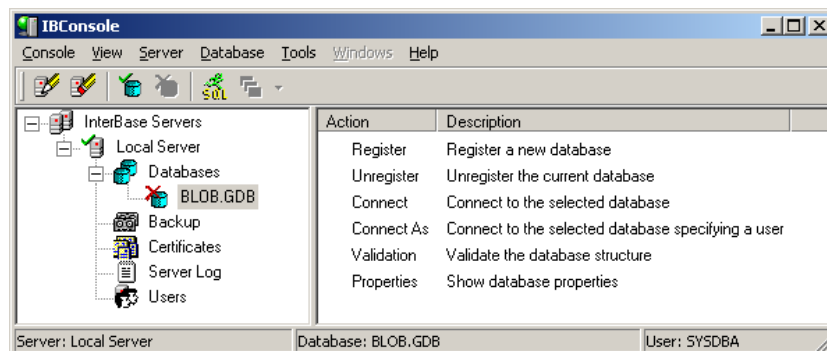
1. Go to **Start ► Programs ► Interbase ► IB Console-** (please retry if an error appears).
2. Check if you have a Local Server with a red cross before it. If not, to register your local server, from the main menu, select **Server ► Register** then **OK**. Then double click on Local Server. User Name is **SYSDBA** and the password is **masterkey**.



3. Check if you have the MT32.GDB under the Databases as shown below. If not, you will need to register your database i.e. from the main menu select **Database ► Register**. Map the File to your MT32.GDB i.e. C:\MT32\Data\MT32.GDB (where C is the hard drive where you installed MedTech). Select **OK** to close.



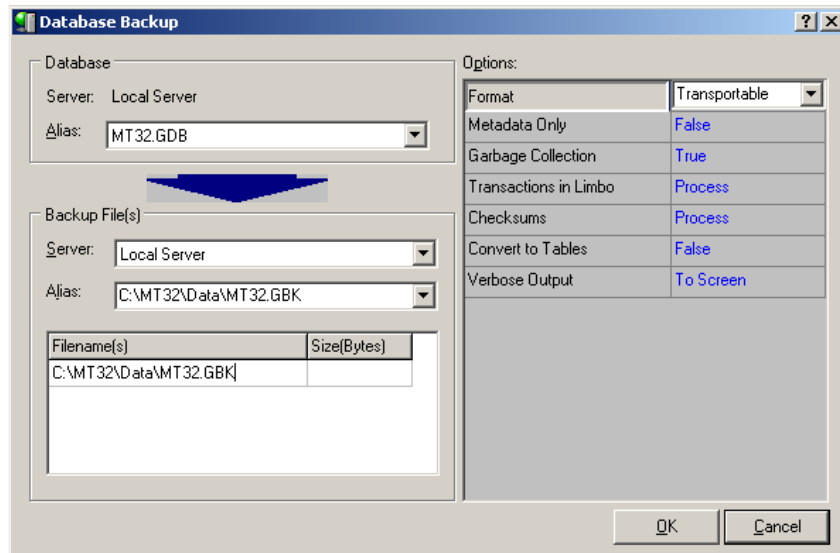
4. Check if you have the BLOB.GDB under the Databases as shown below. If not you will need to register your database i.e. from the main menu select **Database ► Register**. Map the File to your BLOB.GDB i.e. C:\MT32\Data\BLOB.GDB (where C is the hard drive where you installed MedTech). Select **OK** to close.



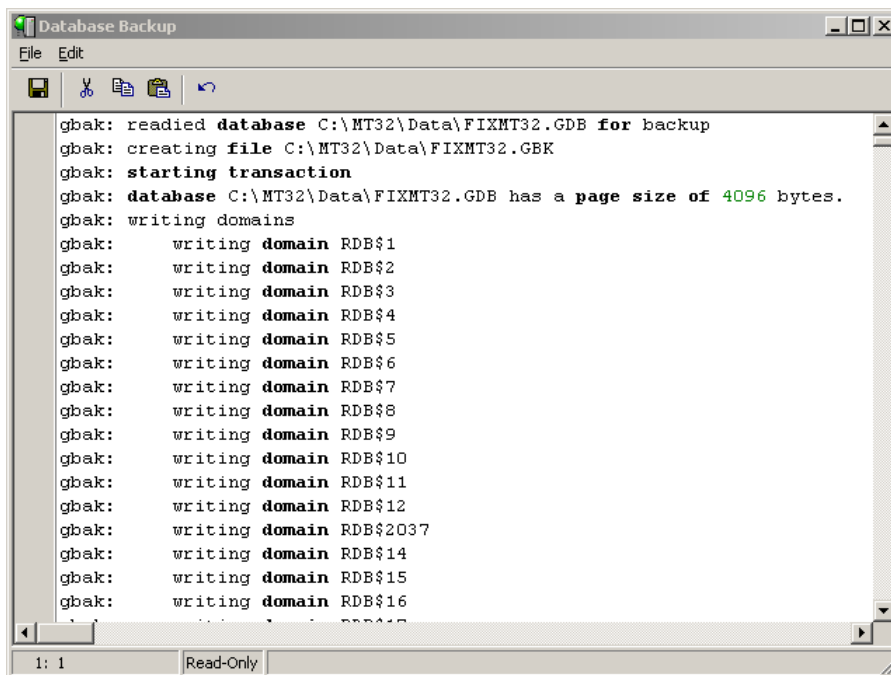
Phase 2: Running Database Backup

To Backup your MT32.GDB

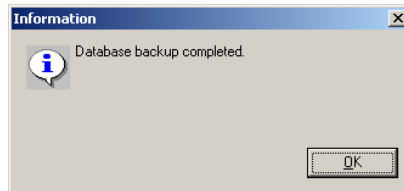
1. To Backup your database go to **Database ► Maintenance ► Backup/Restore ► Backup.**



2. Database Alias should be MT32.GDB. Under the Backup File(s) set Server to Local Server, set Alias and Filename to C:\MT32\Data\MT32.GBK. Then press **OK**

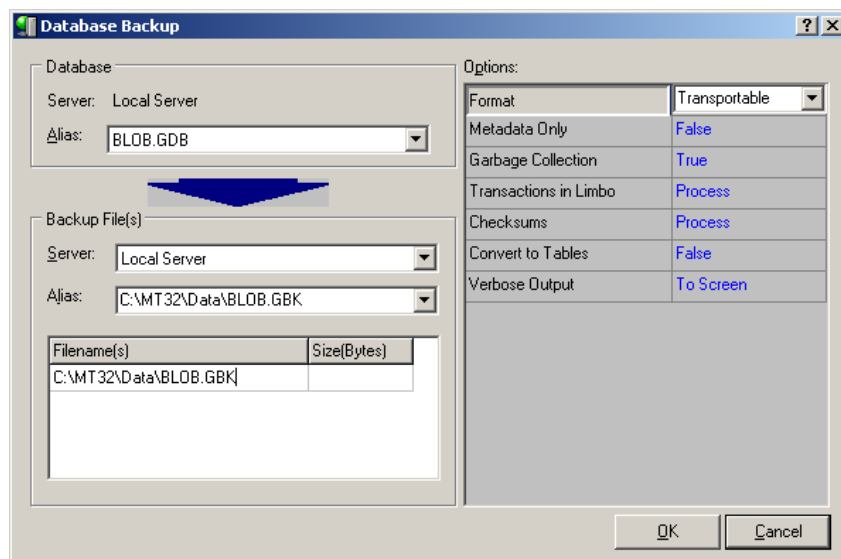


- The time it will take to Backup the database will be dependent on the specification of your server as well as the size of your database. When it's done it will come up with a window saying **Database backup completed**. Press **OK** to close the window and **File** ► **Exit** to close the Database Backup window.

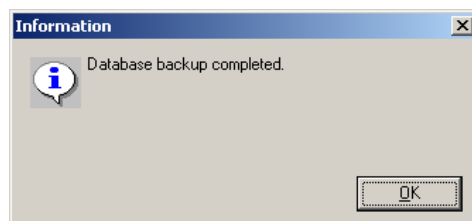


To Backup your BLOB.GDB:

- To Backup your BLOB database, go to **Database** ► **Maintenance** ► **Backup/Restore** ► **Backup**. Database Alias should be BLOB.GDB. Under the Backup File(s) set Server to Local Server, set Alias and Filename to C:\MT32\Data\BLOB.GBK. Then press **OK**.



- The time it will take to Backup the database will be dependent on the specification of your server as well as the size of your database. When it is done it will come up with a window saying **Database backup completed**. Press **OK** to close the window and **File** ► **Exit** to close the Database Backup window.



Phase 3: Running Database Restore

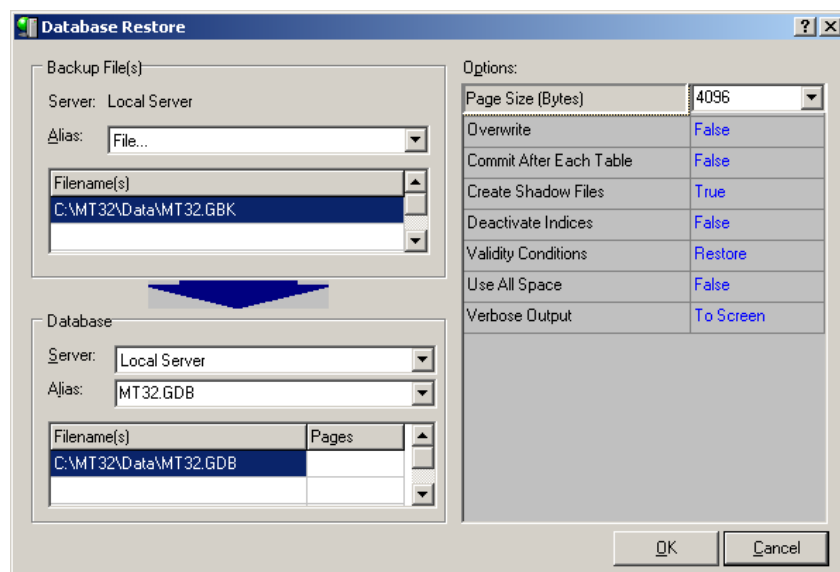
Note

To Restore your BLOB.GDB using the following instructions just replace all instance of the word MT32 with BLOB.

1. Before restoring your backup database, first go back to the MT32\Data folder and rename the existing MT32.GDB to oldMT32.GDB.
2. To restore your database, go to **Database ► Maintenance ► Backup/ Restore ► Restore**. Backup File(s) Alias should be C:\MT32\Data\MT32.GBK. Under Options Page Size (Bytes) should be 4096.

FOR MT32.GDB with size less than 2GB:

Under the Database, set Alias and Filename(s) to C:\MT32\Data\MT32.GDB. Press **OK**.



FOR MT32.GDB with size more than 2GB:

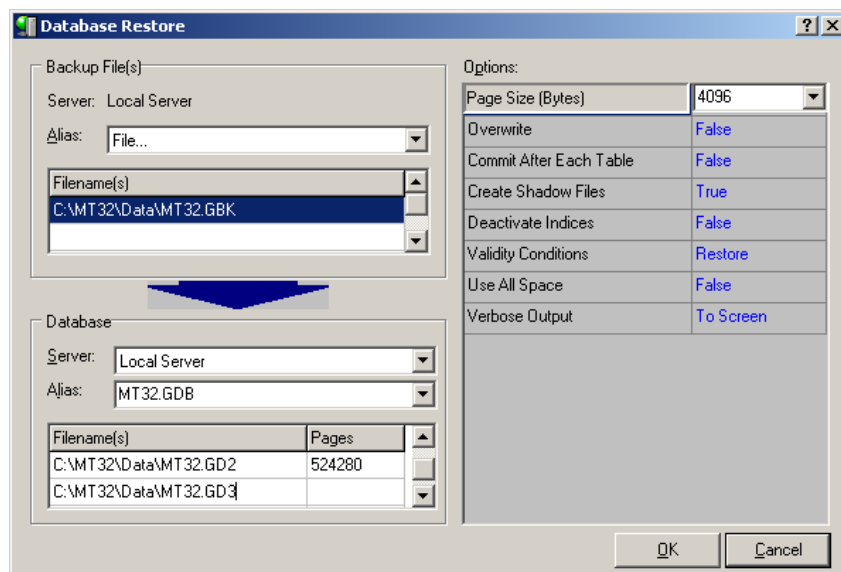
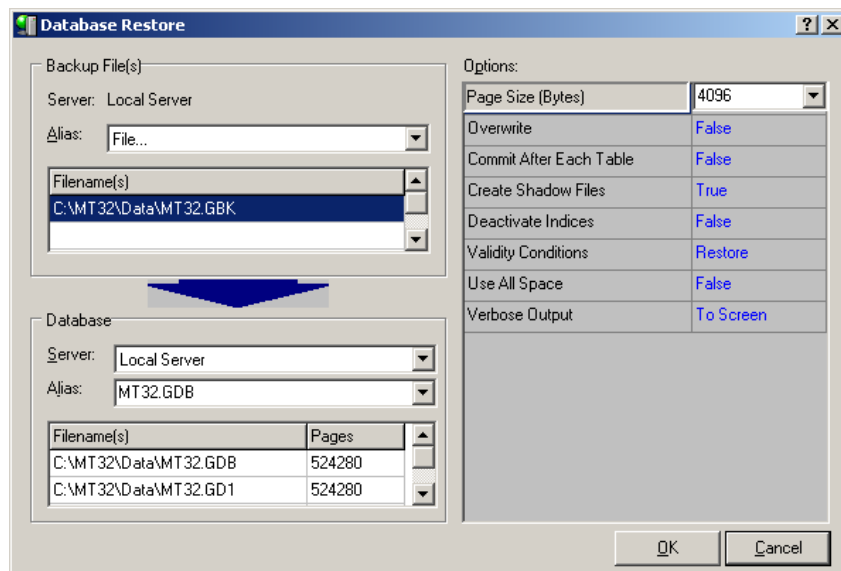
The number of Filenames you will use will be dependent on the size of your FIXMT32.GDB. Always divide the size of your MT32.GDB by 2GB then add 1 more Filename i.e. if your MT32.GDB is 5GB, divided by 2GB equals 2.5, round this off to the next whole number which is 3 plus 1 equals 4 Filenames.

Then under Database, set Alias and first Filename(s) to C:\MT32\Data\MT32.GDB. Also set Pages to 524280 then press **Ctrl+Tab** to move to the next line.

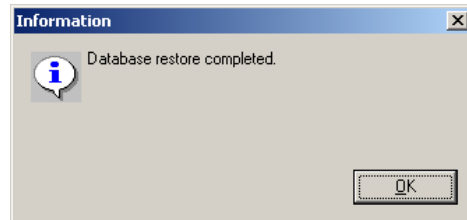
On the second line type the Filename as C:\MT32\Data\MT32.GD1 with Pages as 524280 and then **Ctrl+Tab** to move to the third line.

On the third line type the Filename as C:\MT32\Data\MT32.GD2 with Pages as 524280 and then **Ctrl+Tab** to move to the fourth line.

On this last line type the Filename as C:\MT32\Data\MT32.GD3 with Pages blank. This will allow the last database file to grow without size limitations.



3. The time it will take to Restore is generally longer than the Backup. When it is done it will come up with a window saying **Database restore completed**. Press **OK** to close the window and **File ► Exit** to close the Database Restore window.



4. Finally log into MedTech32 and test if you can access the database. If so, then go to C:\MT32\Data\ and delete the following files "oldMT32.GDB", "Copy of MT32.GDB" and the "MT32.GBK". Do not forget to empty the Recycle Bin on the desktop to free up hard drive space.



Note

If you have any doubts or concerns, please do not hesitate to contact the MedTech Helpdesk on 1800 148 165 → Option 1 → Option 1 for further assistance.